

# What is an SEOW and What is It Good For? A Discussion of the Role of DDATA

The Delaware Prevention Advisory  
Council Meeting  
September 9, 2013

According to the U.S. Substance  
Abuse and Mental Health Services  
Administration (SAMHSA)

*(funding agency for the Strategic  
Prevention Framework State Incentive  
Grant (SPF-SIG))*

# A State Epidemiological Outcomes Workgroup (SEOW) is:

- A group of key data and prevention stakeholders that meet regularly to share data and create data-guided products that inform prevention policies

# The SEOW Mission has two main jobs:

- To bring substance abuse and related behavioral problems data to prevention planning
- To build state- and community-level monitoring systems

# SEOW Core Tasks are:

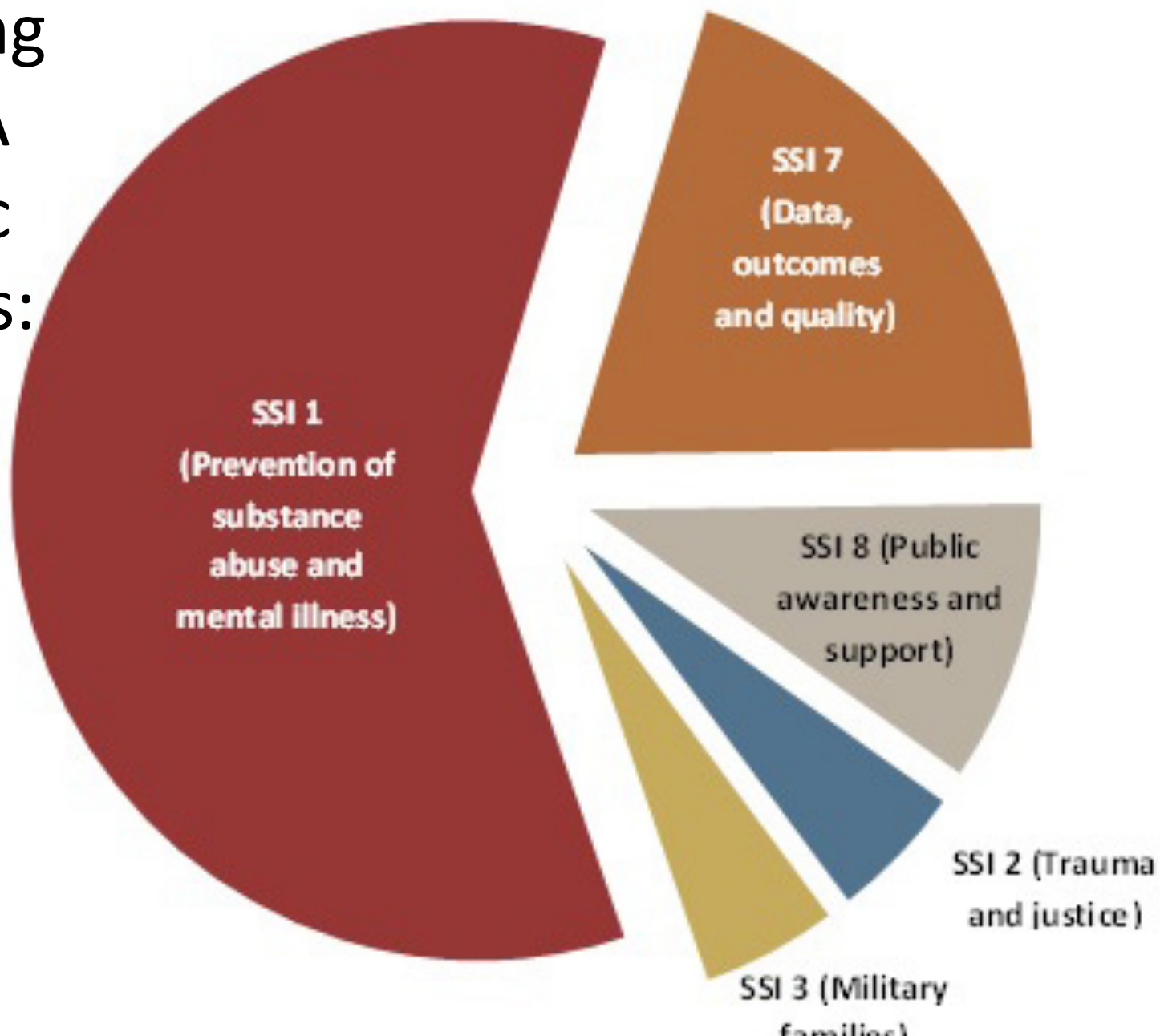
- Identify, share, organize and profile data from existing state and local sources
- Create data-guided products that inform prevention planning and policies
- Train communities in understanding, using and presenting data in an effective manner
- Build state- and local-level monitoring and surveillance systems

# SEOW products include:

- A formal SEOW Charter describing mission, tasks and membership
- A state epidemiological Profile—reference guide to key indicators
- A user-friendly fact sheet for communities
- Dissemination products geared towards communicating data priorities to policy makers
- Monitoring system to track/monitor key indicators and emerging priorities

Figure 1: SEOW Efforts to Address SSIs

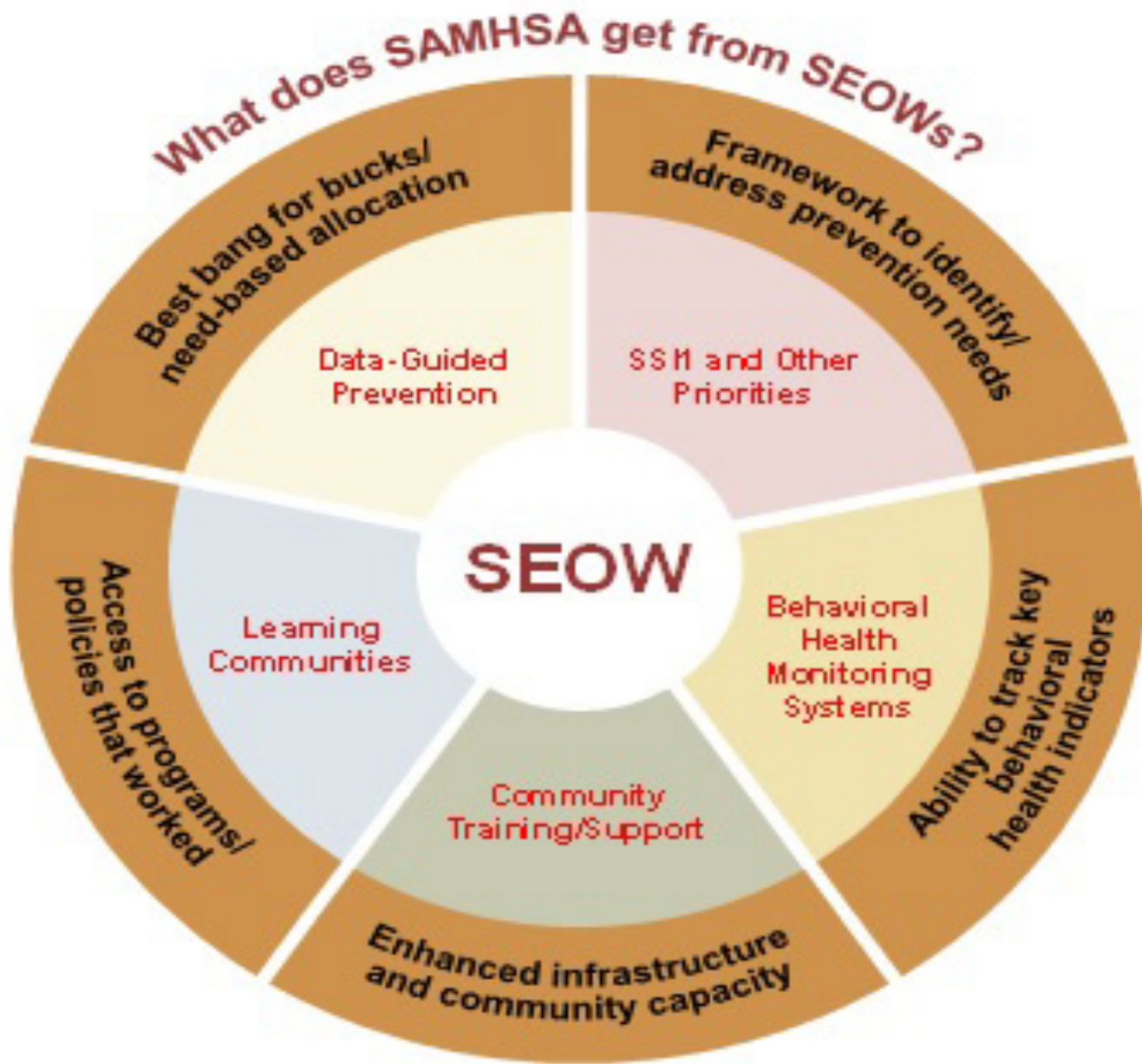
Addressing  
SAMHSA  
Strategic  
Initiatives:



# Value added:

- Enhanced collaboration and data sharing, bringing key state, community and tribal organizations to the table
- Enhanced prevention workforce and epidemiological capacity, bringing expertise and data to prevention planning
- Enhanced data monitoring, tracking priorities and emerging trends
- Increased public awareness and support





# Two Basic Jobs:

- Data in
- Data out

# Two committees proposed:

- Data-in committee
- Data-out (products and paths) committee

# Data Gathering

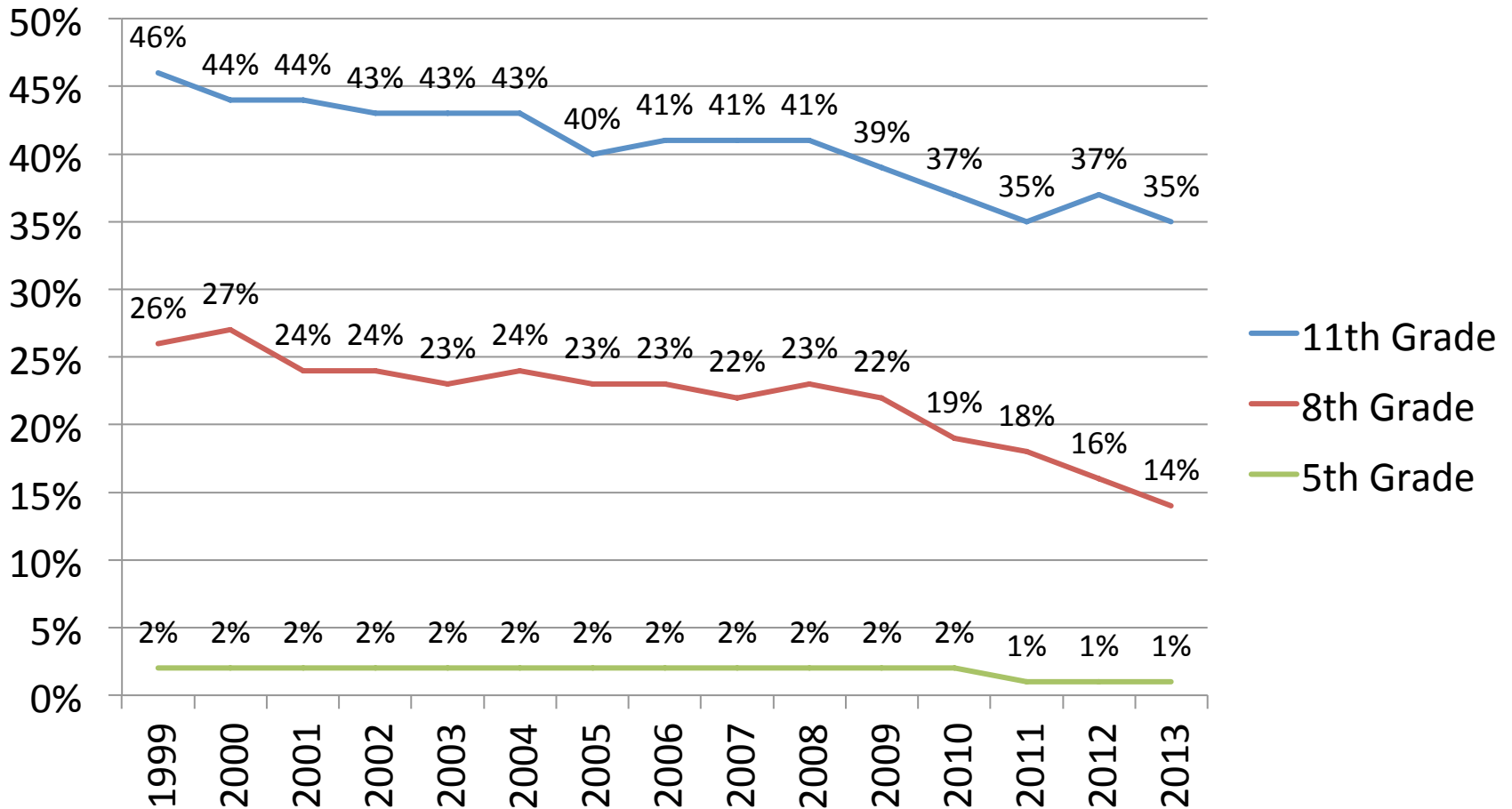
- ER data
- School survey data
- Traffic data
- Poison Control Center data
- Crime data

# Data monitoring:

- Comparisons
- Trends
- Costs

Latest trends:

# Delaware Trends: Past 30 Day Alcohol Use



# Delaware Trends: Past 30 Day Cigarette Use

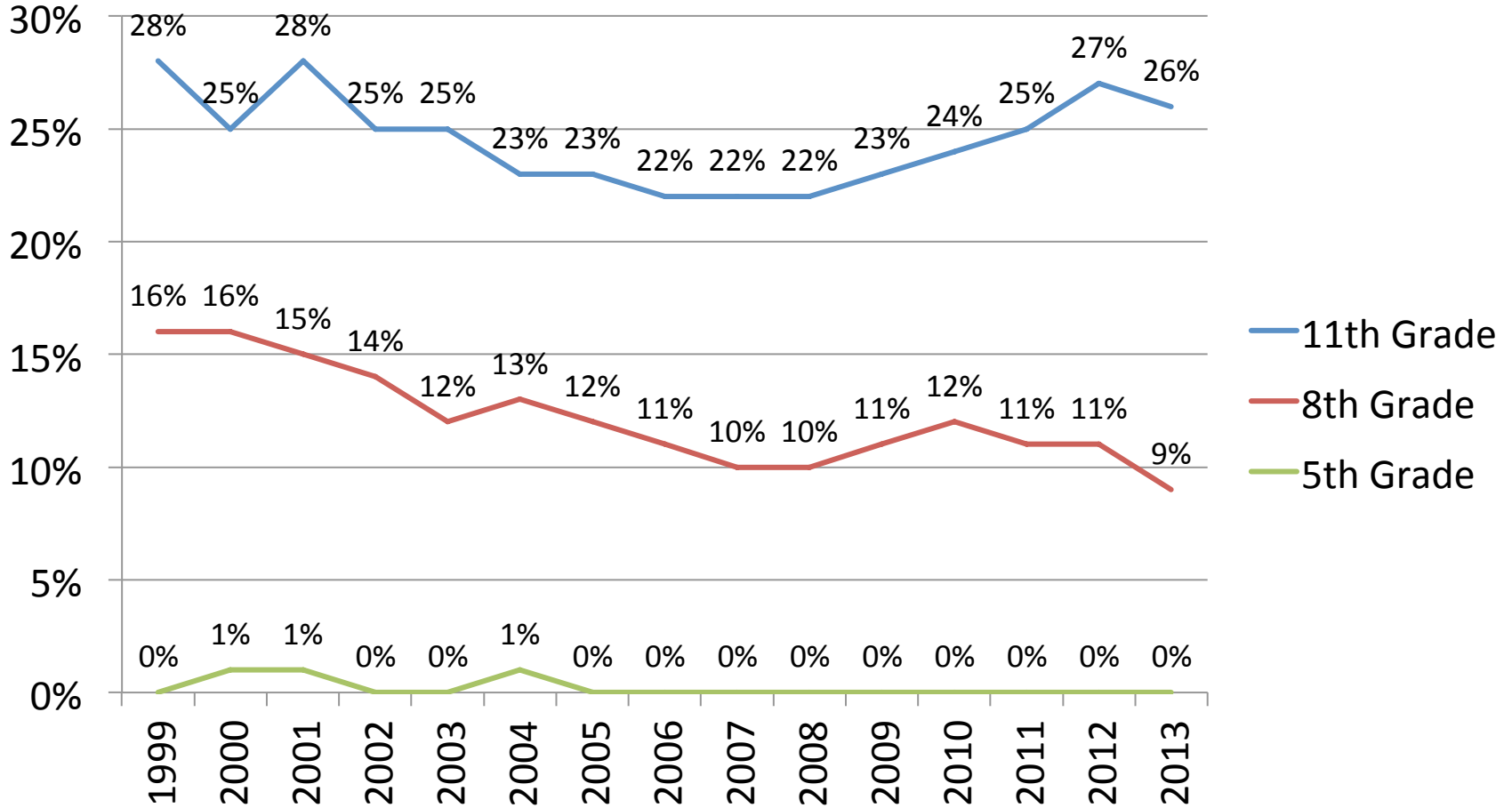


Note: 0% means the estimate is less than one-half of one percent

State Trends Delaware School Survey 1999-2013, Center for Drug & Alcohol Studies, 2013



# Delaware Trends: Past 30 Day Marijuana Use



Note: 0% means the estimate is less than one-half of one percent

State Trends Delaware School Survey 1999-2013, Center for Drug & Alcohol Studies, 2013