

Delaware State Trends: Local Crime and School Data

October 7, 2011

Presentation to
the Strategic Prevention Framework-State Incentive Grant
Delaware Advisory Council



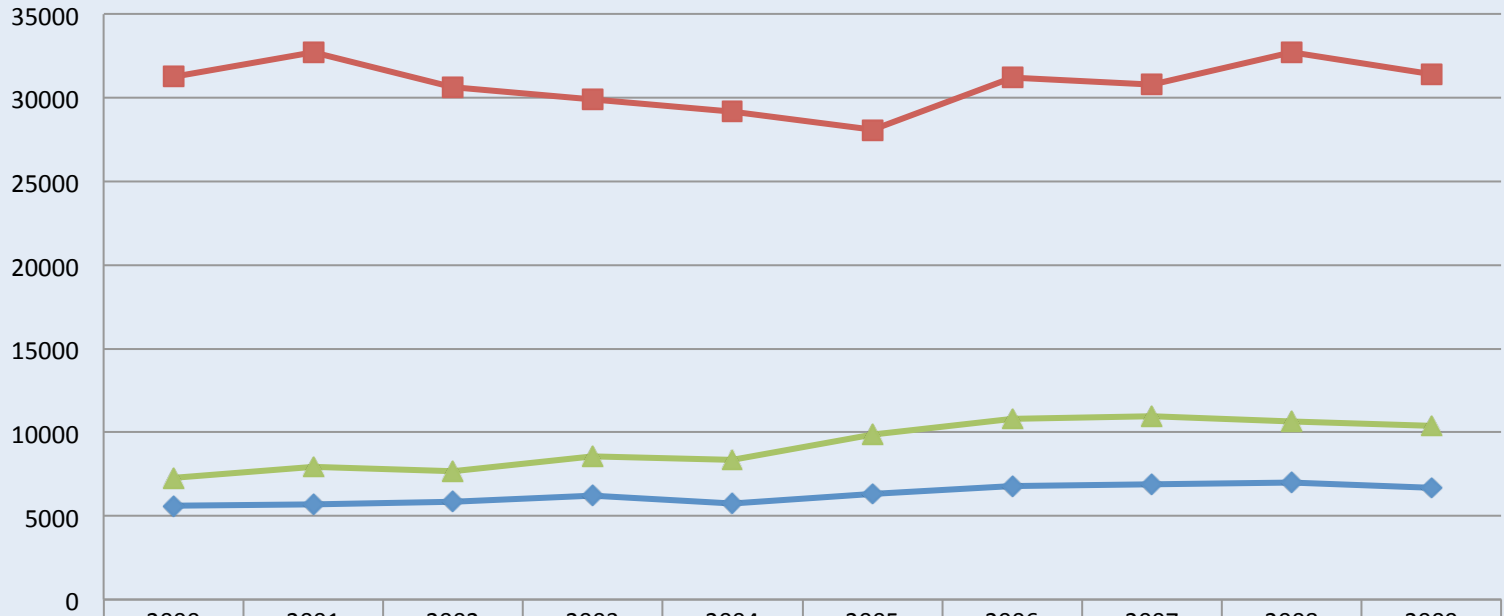
Sponsored by Award SP015607 from the Center for Substance Abuse Prevention, SAMHSA

Including:

- Crime Trends by Delaware Community
- DUI reports
- 2011 School Survey Trends
- Plans for 2012 School Survey

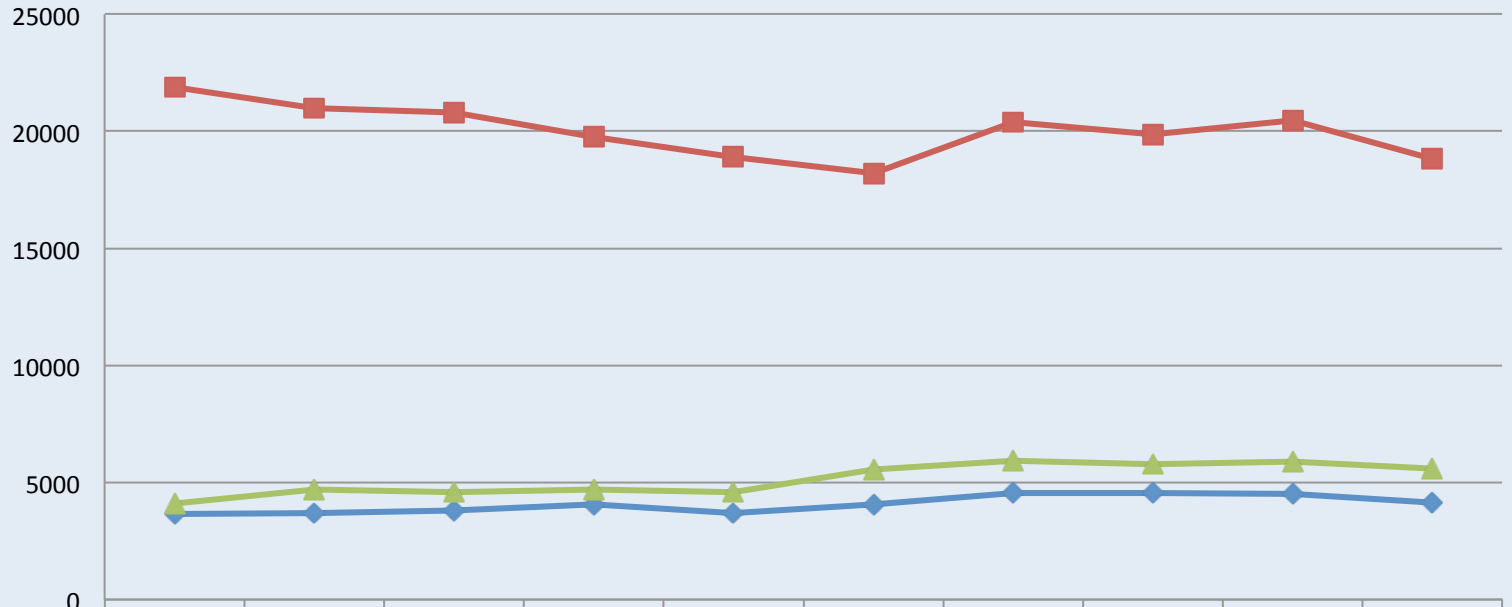
Crime in Delaware Trends and Comparisons from the State Crime Report

Statewide Crime Trend 2000-2009



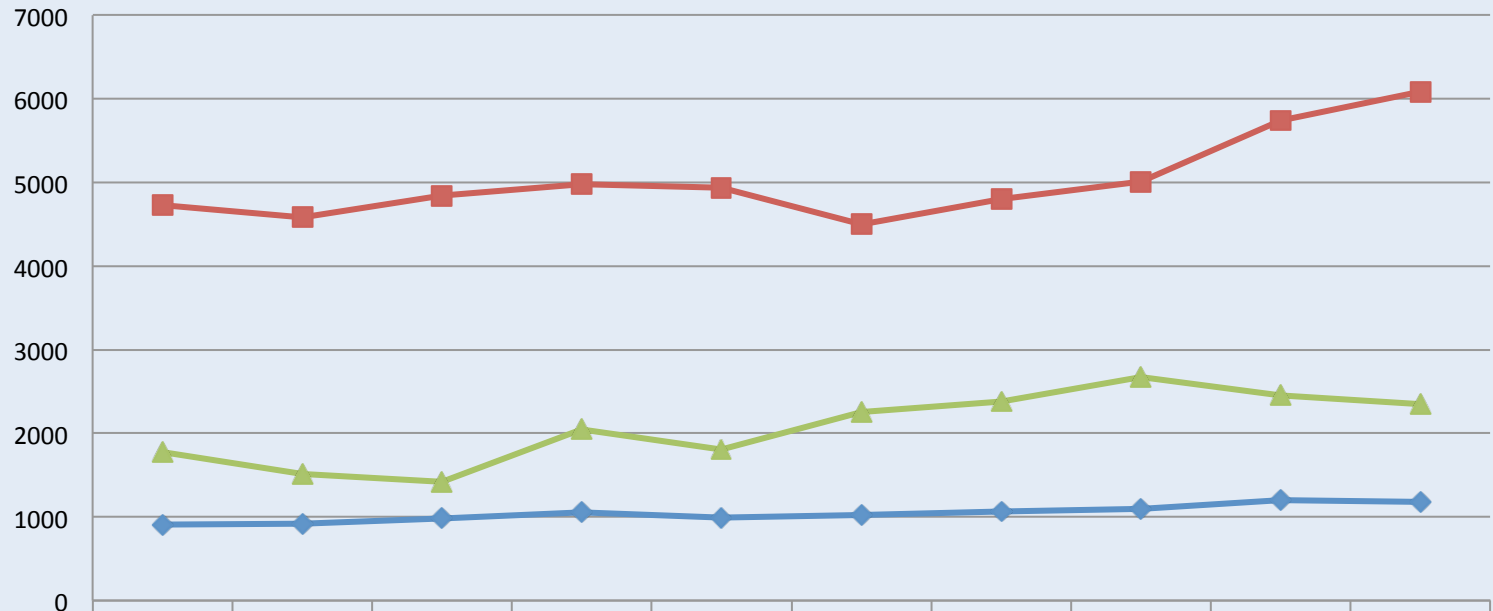
	2000	2001	2002	2003	2004	2005	2006	2007	2008	2009
Violent Crime	5611	5685	5841	6212	5719	6294	6786	6907	7009	6673
Property Crime	31277	32729	30632	29889	29189	28094	31213	30778	32729	31414
Drug Offenses	7277	7912	7685	8549	8341	9876	10810	10959	10634	10387

NCC Crime Trend 2000-2009



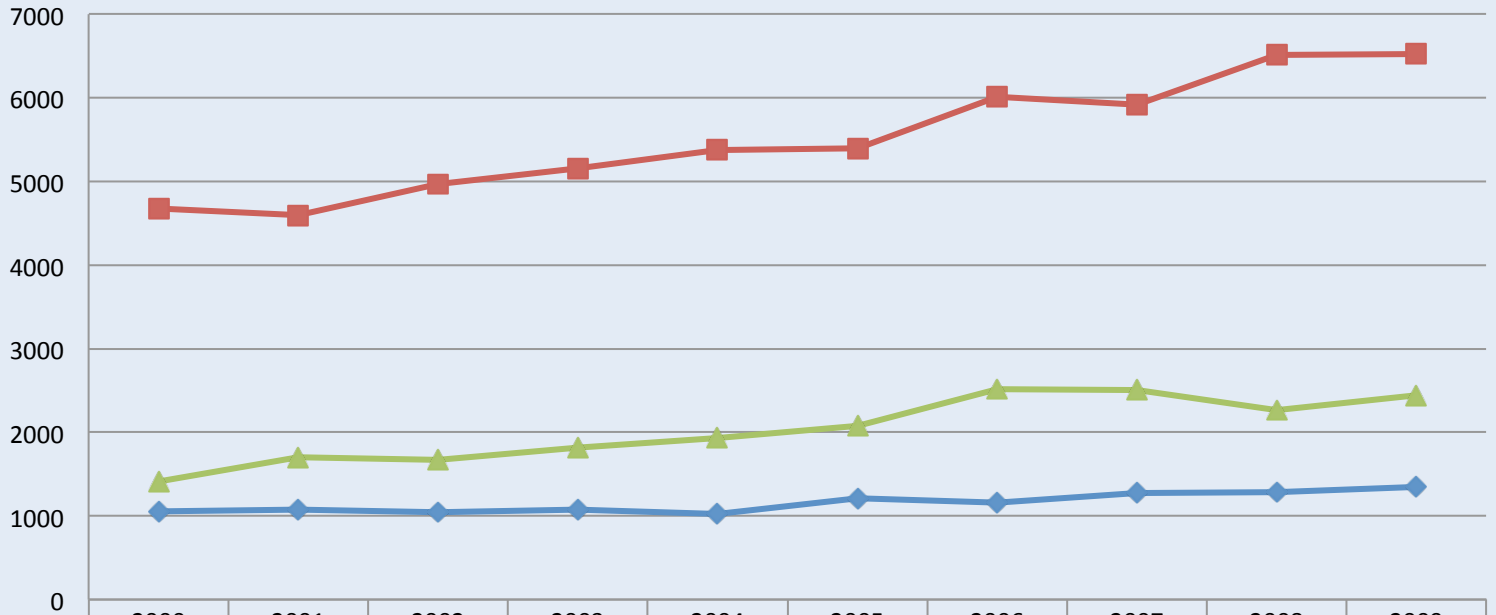
	2000	2001	2002	2003	2004	2005	2006	2007	2008	2009
Violent Crime	3647	3687	3810	4080	3708	4055	4563	4535	4522	4146
Property Crime	21870	20978	20819	19750	18883	18207	20401	19856	20475	18807
Drug Offenses	4093	4695	4600	4684	4597	5538	5911	5769	5907	5596

Kent County Crime Trend 2000-2009



	2000	2001	2002	2003	2004	2005	2006	2007	2008	2009
Violent Crime	908	920	982	1058	990	1025	1060	1099	1205	1181
Property Crime	4727	4577	4847	4983	4934	4494	4804	5007	5740	6087
Drug Offenses	1772	1513	1416	2048	1809	2257	2384	2671	2457	2352

Sussex County Crime Trend 2000-2009

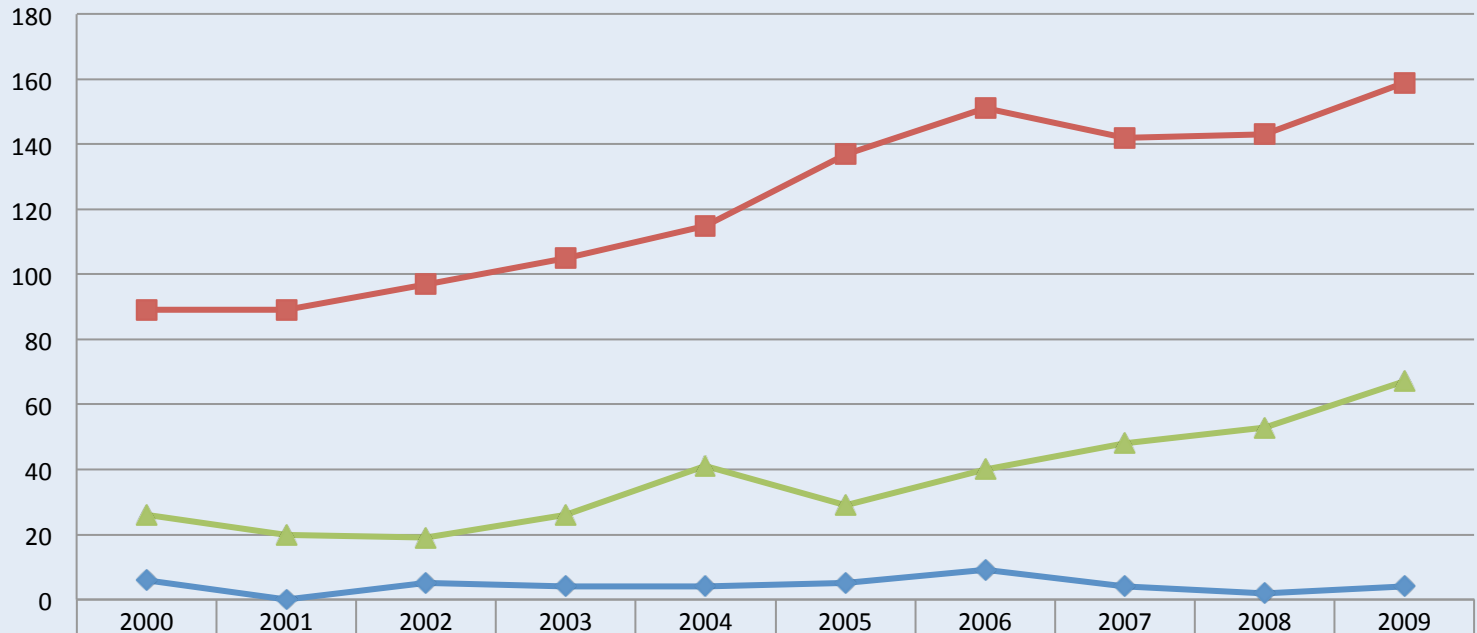


	2000	2001	2002	2003	2004	2005	2006	2007	2008	2009
Violent Crime	1056	1078	1049	1074	1021	1214	1163	1273	1282	1346
Property Crime	4680	4597	4966	5156	5372	5393	6008	5915	6514	6520
Drug Offenses	1412	1704	1669	1817	1935	2081	2515	2509	2270	2439

County Crime Comparison 2009

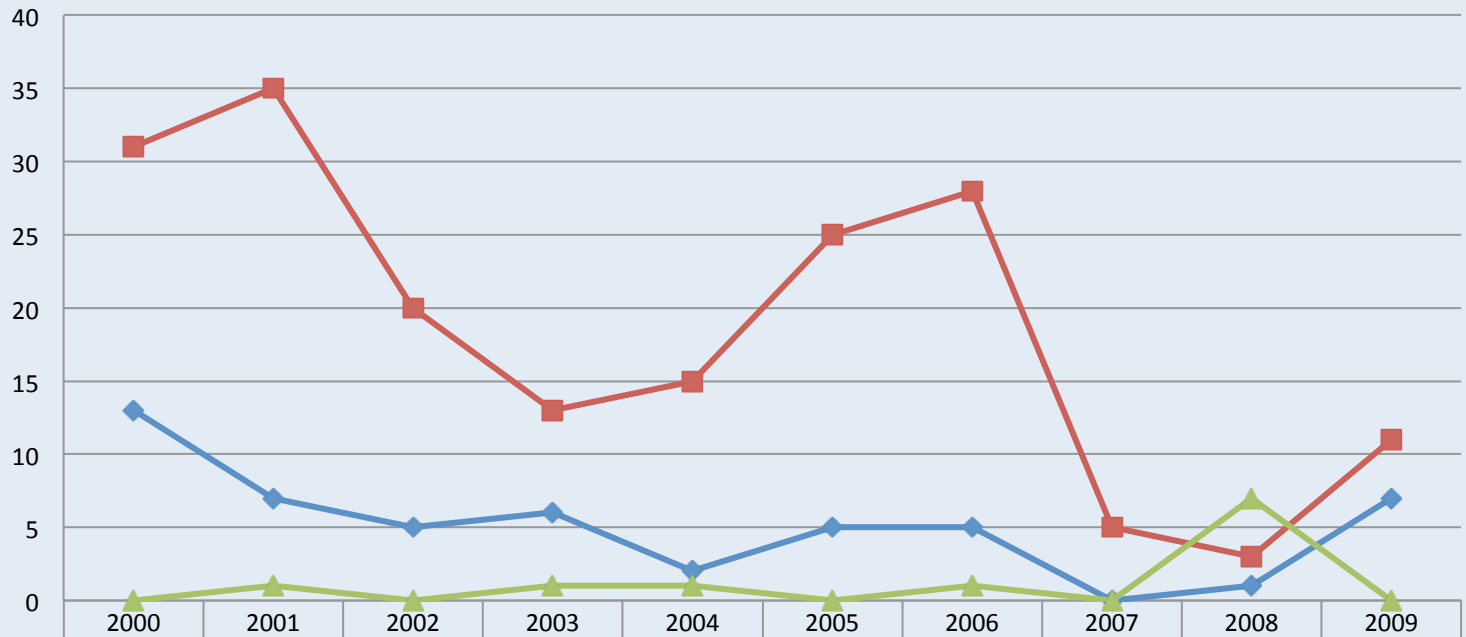


Bethany Beach Crime Trend 2000-2009



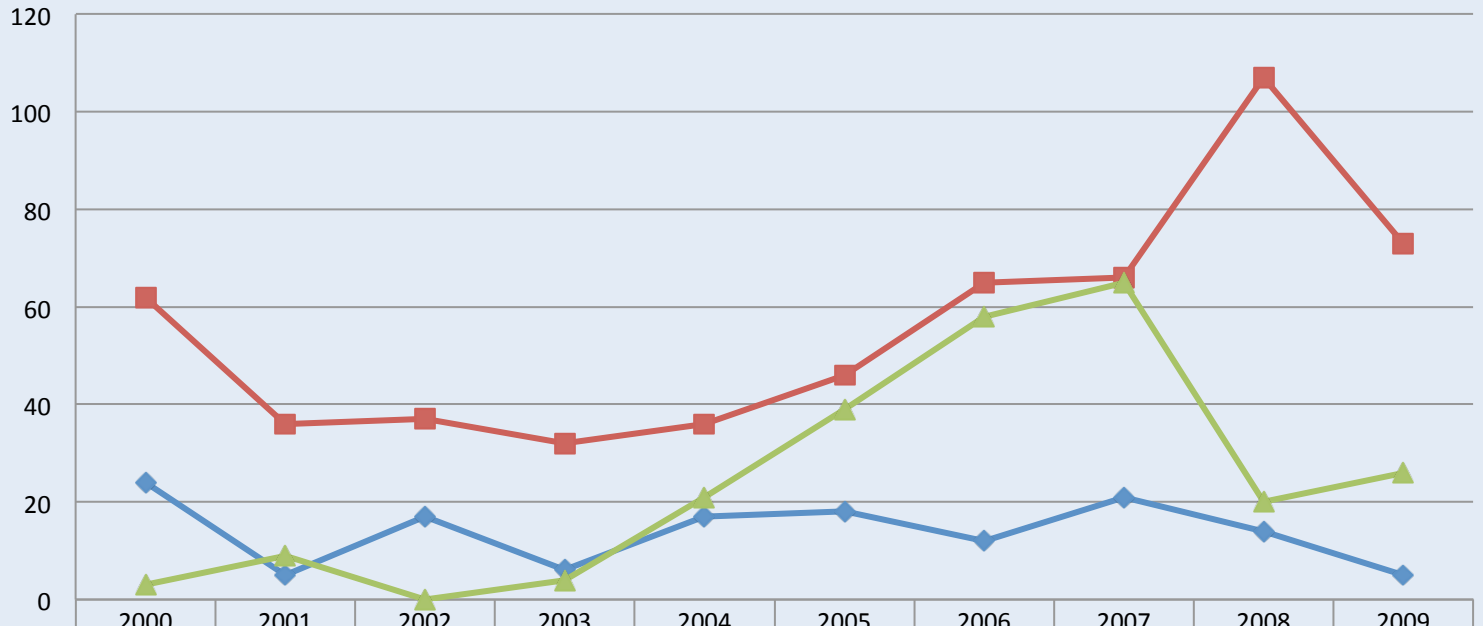
◆ Violent Crime	6	0	5	4	4	5	9	4	2	4
■ Property Crime	89	89	97	105	115	137	151	142	143	159
▲ Drug Offenses	26	20	19	26	41	29	40	48	53	67

Blades Crime Trend 2000-2009



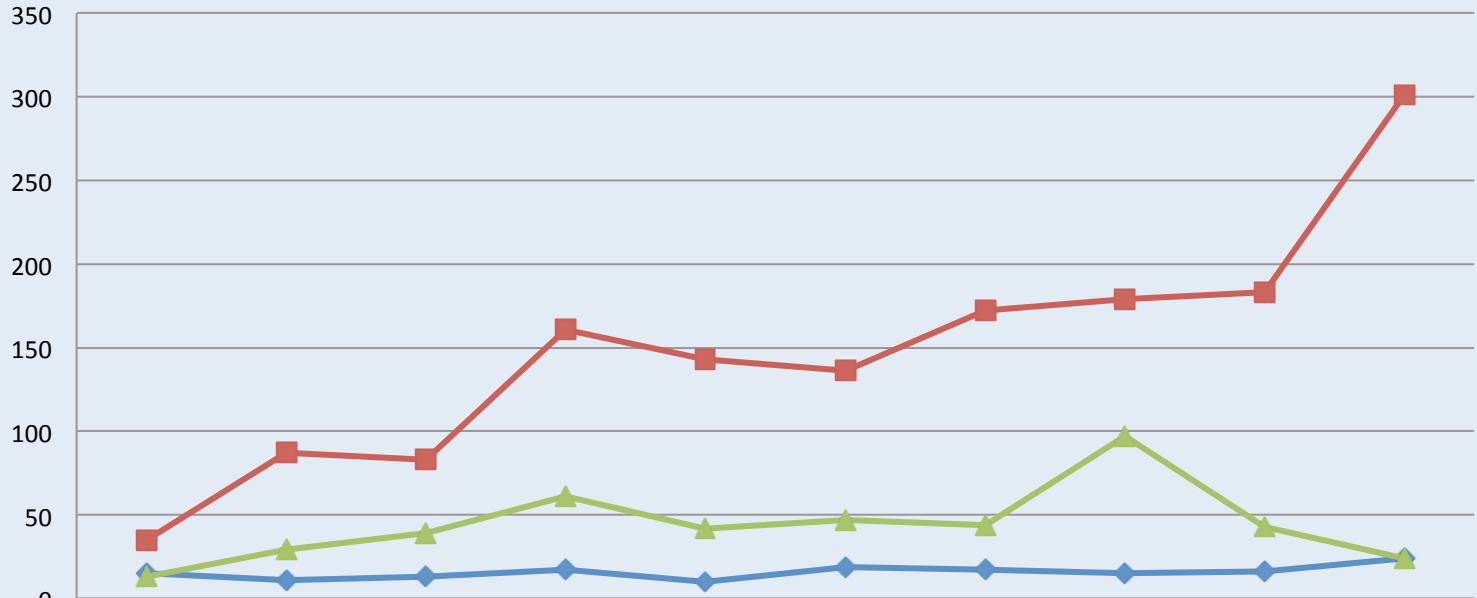
◆ Violent Crime	13	7	5	6	2	5	5	0	1	7
■ Property Crime	31	35	20	13	15	25	28	5	3	11
▲ Drug Offenses	0	1	0	1	1	0	1	0	7	0

Bridgeville Crime Trend 2000-2009



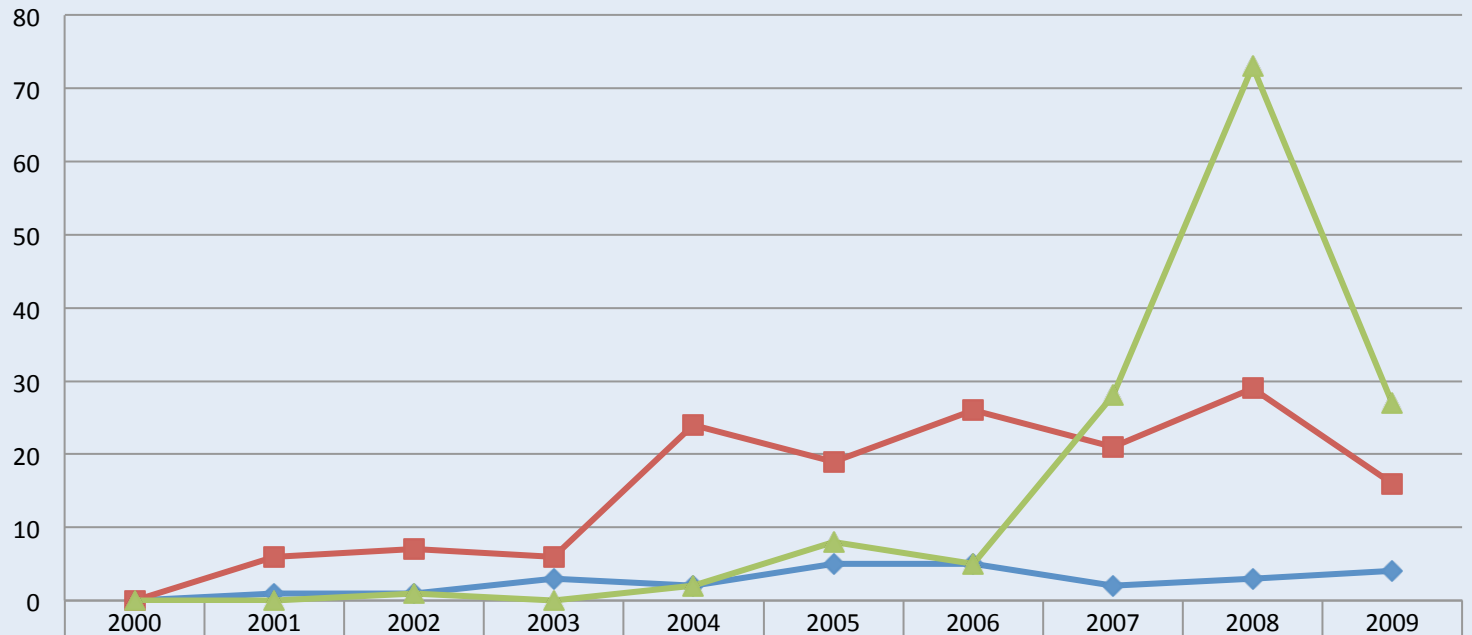
Violent Crime	24	5	17	6	17	18	12	21	14	5
Property Crime	62	36	37	32	36	46	65	66	107	73
Drug Offenses	3	9	0	4	21	39	58	65	20	26

Camden Crime Trend 2000-2009



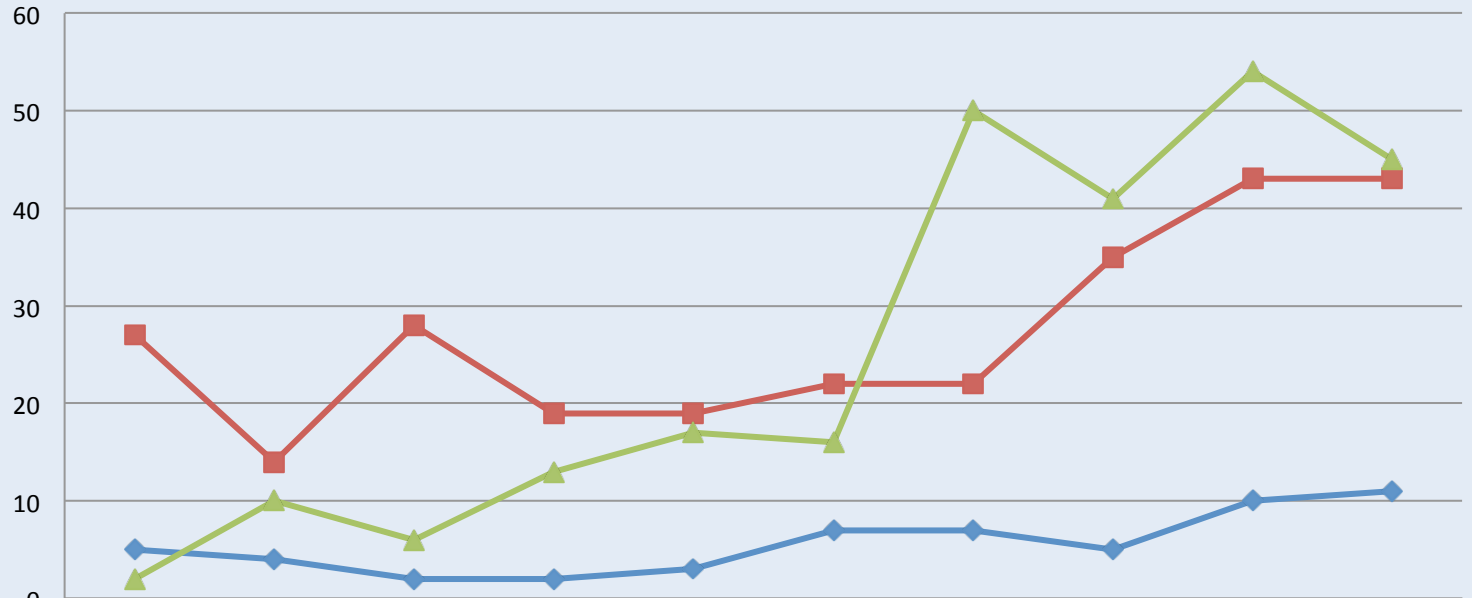
	2000	2001	2002	2003	2004	2005	2006	2007	2008	2009
Violent Crime	15	11	13	17	10	19	17	15	16	24
Property Crime	35	87	83	161	143	136	172	179	183	301
Drug Offenses	13	29	39	61	42	47	44	97	43	24

Cheswold Crime Trend 2000-2009



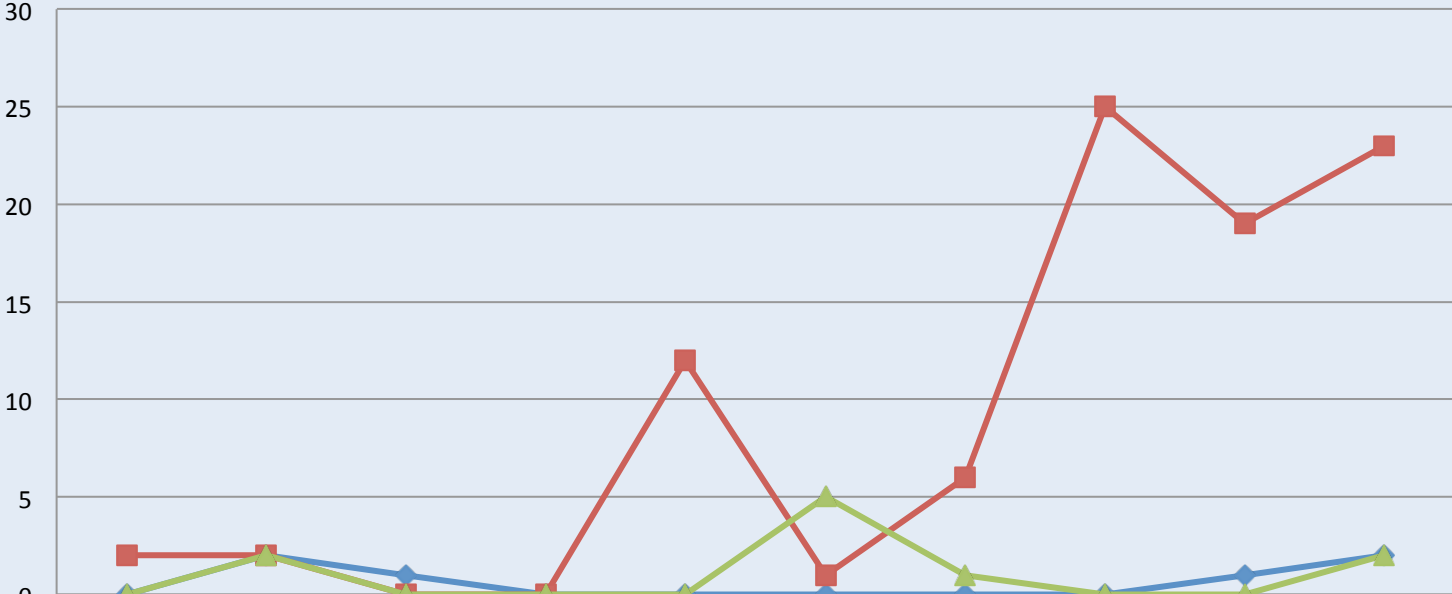
	2000	2001	2002	2003	2004	2005	2006	2007	2008	2009
Violent Crime	0	1	1	3	2	5	5	2	3	4
Property Crime	0	6	7	6	24	19	26	21	29	16
Drug Offenses	0	0	1	0	2	8	5	28	73	27

Clayton Crime Trend 2000-2009



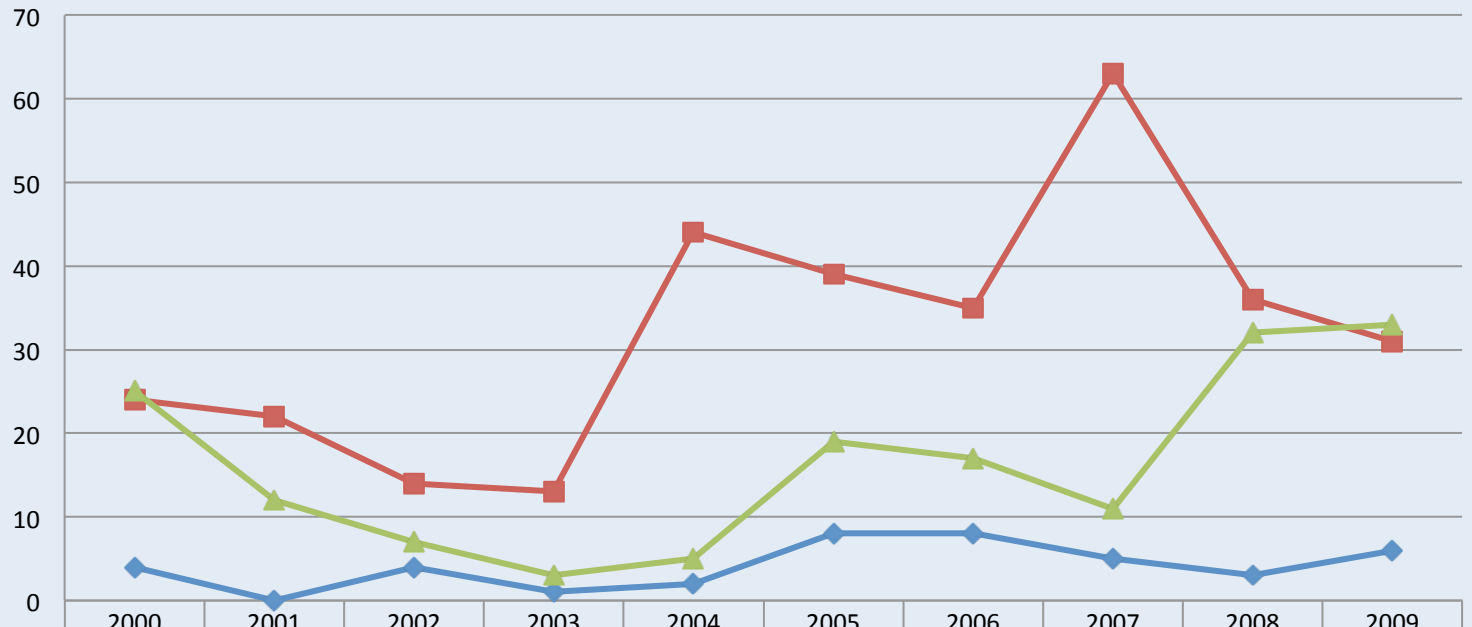
	2000	2001	2002	2003	2004	2005	2006	2007	2008	2009
Violent Crime	5	4	2	2	3	7	7	5	10	11
Property Crime	27	14	28	19	19	22	22	35	43	43
Drug Offenses	2	10	6	13	17	16	50	41	54	45

Dagsboro Crime Trend 2000-2009



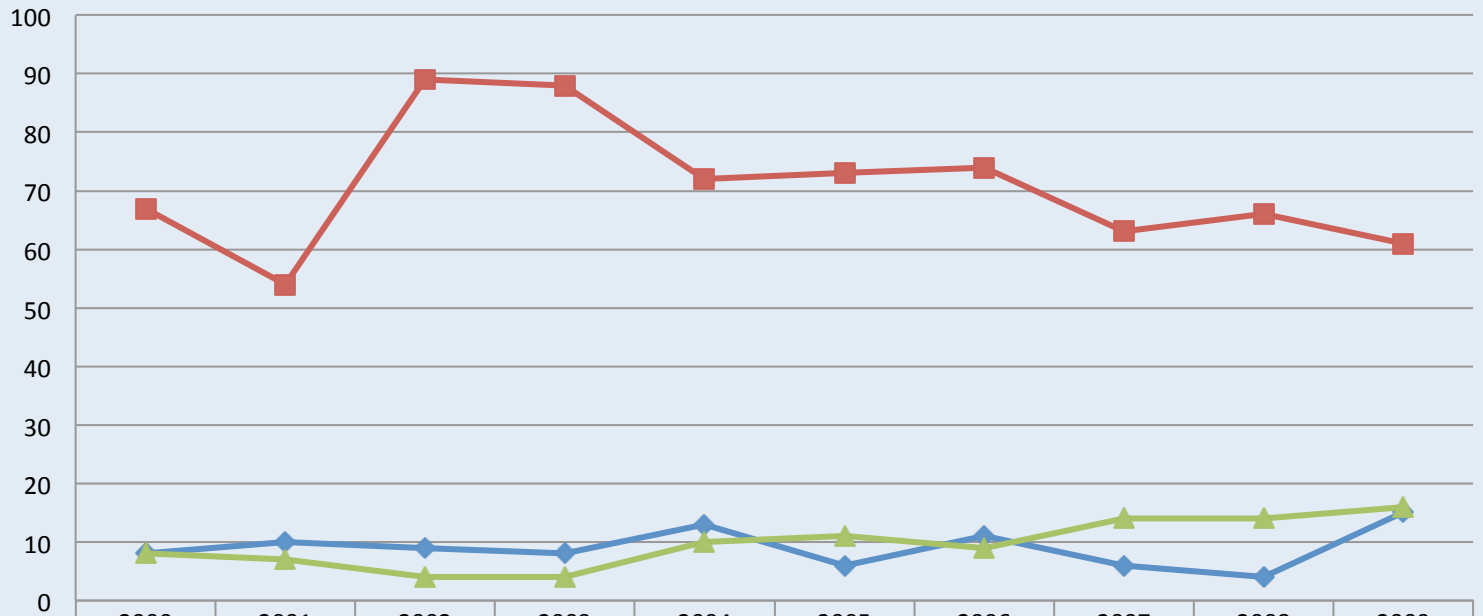
	2000	2001	2002	2003	2004	2005	2006	2007	2008	2009
Violent Crime	0	2	1	0	0	0	0	0	1	2
Property Crime	2	2	0	0	12	1	6	25	19	23
Drug Offenses	0	2	0	0	0	5	1	0	0	2

Delaware City Crime Trend 2000-2009



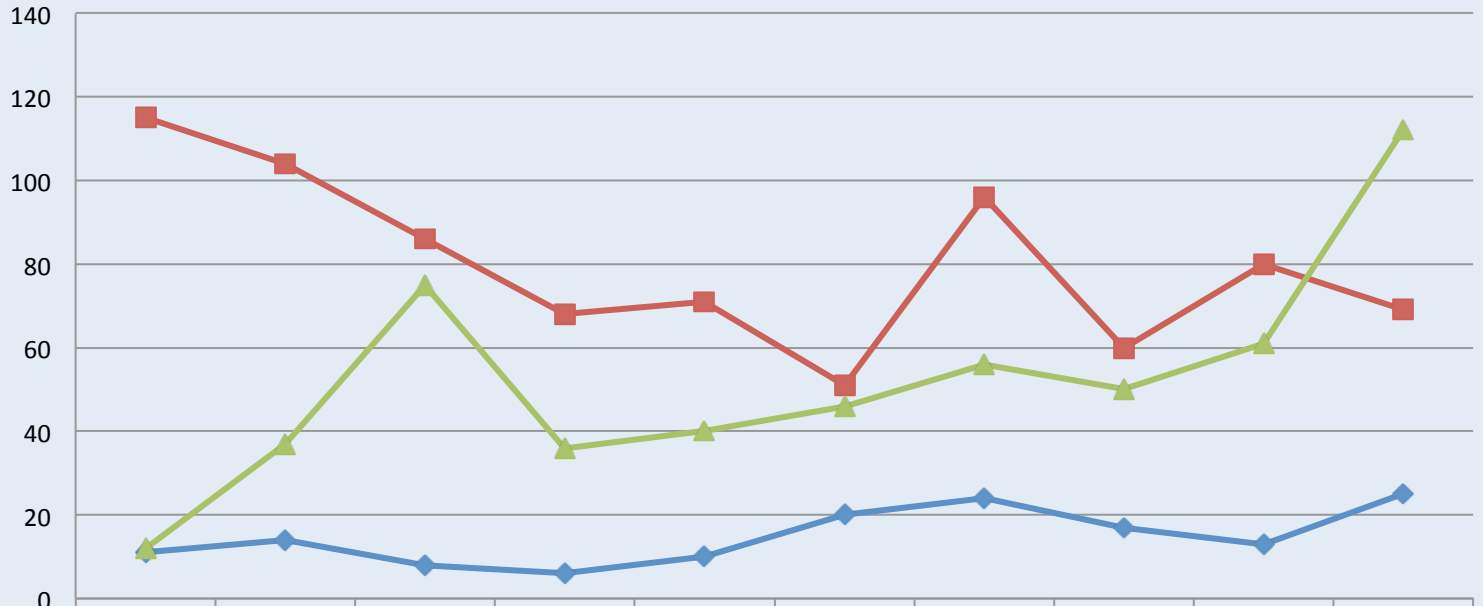
	2000	2001	2002	2003	2004	2005	2006	2007	2008	2009
Violent Crime	4	0	4	1	2	8	8	5	3	6
Property Crime	24	22	14	13	44	39	35	63	36	31
Drug Offenses	25	12	7	3	5	19	17	11	32	33

Delmar Crime Trend 2000-2009



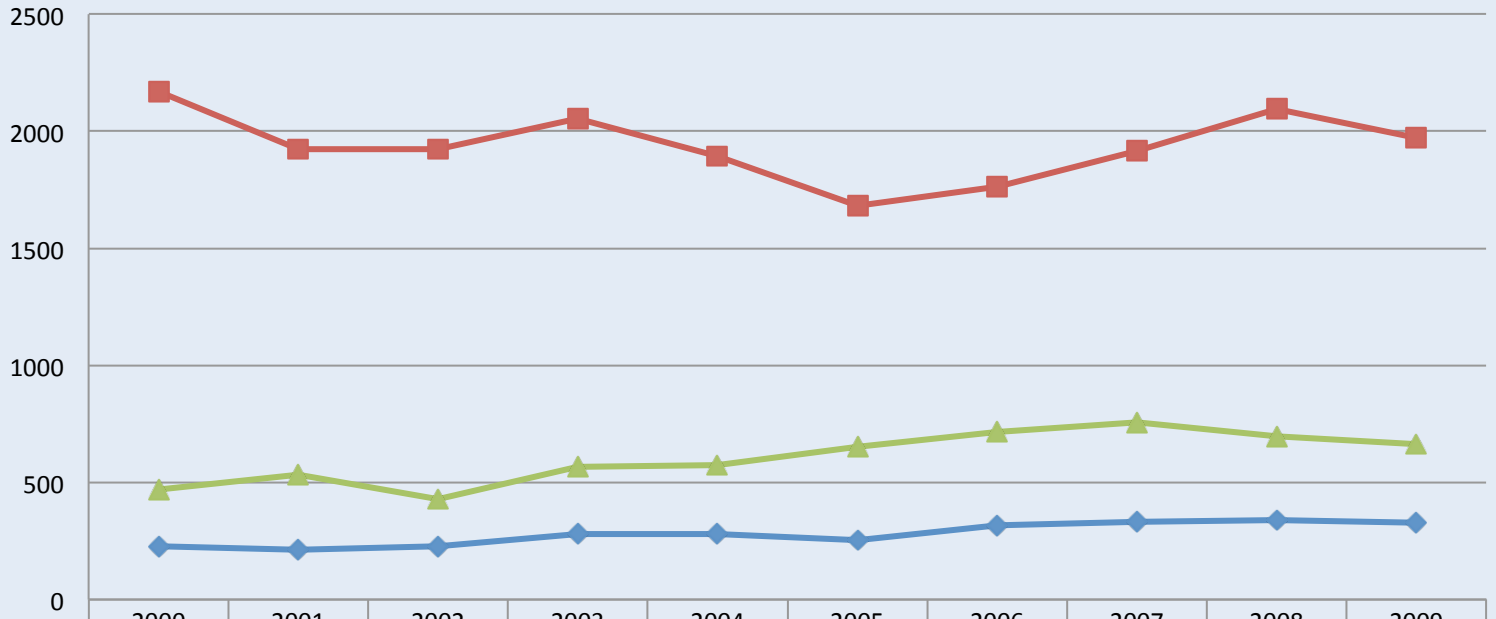
	2000	2001	2002	2003	2004	2005	2006	2007	2008	2009
Violent Crime	8	10	9	8	13	6	11	6	4	15
Property Crime	67	54	89	88	72	73	74	63	66	61
Drug Offenses	8	7	4	4	10	11	9	14	14	16

Dewey Beach Crime Trend 2000-2009



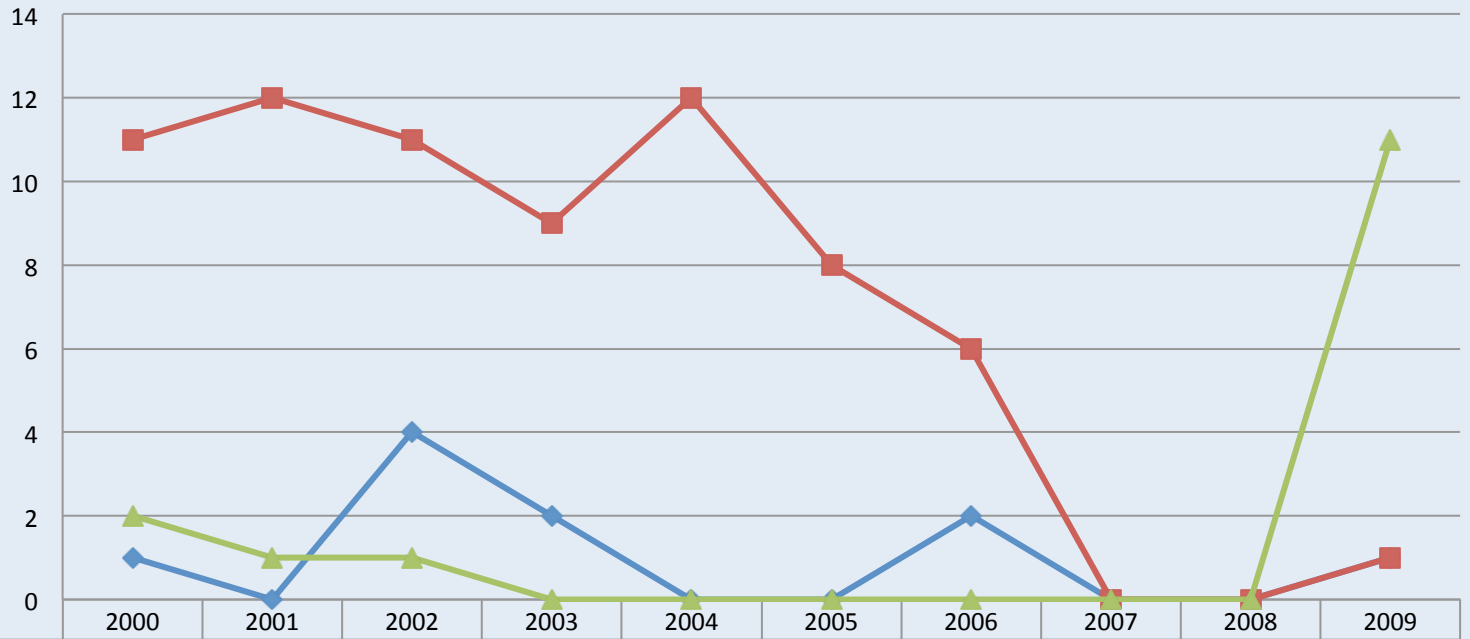
	2000	2001	2002	2003	2004	2005	2006	2007	2008	2009
Violent Crime	11	14	8	6	10	20	24	17	13	25
Property Crime	115	104	86	68	71	51	96	60	80	69
Drug Offenses	12	37	75	36	40	46	56	50	61	112

Dover Crime Trend 2000-2009



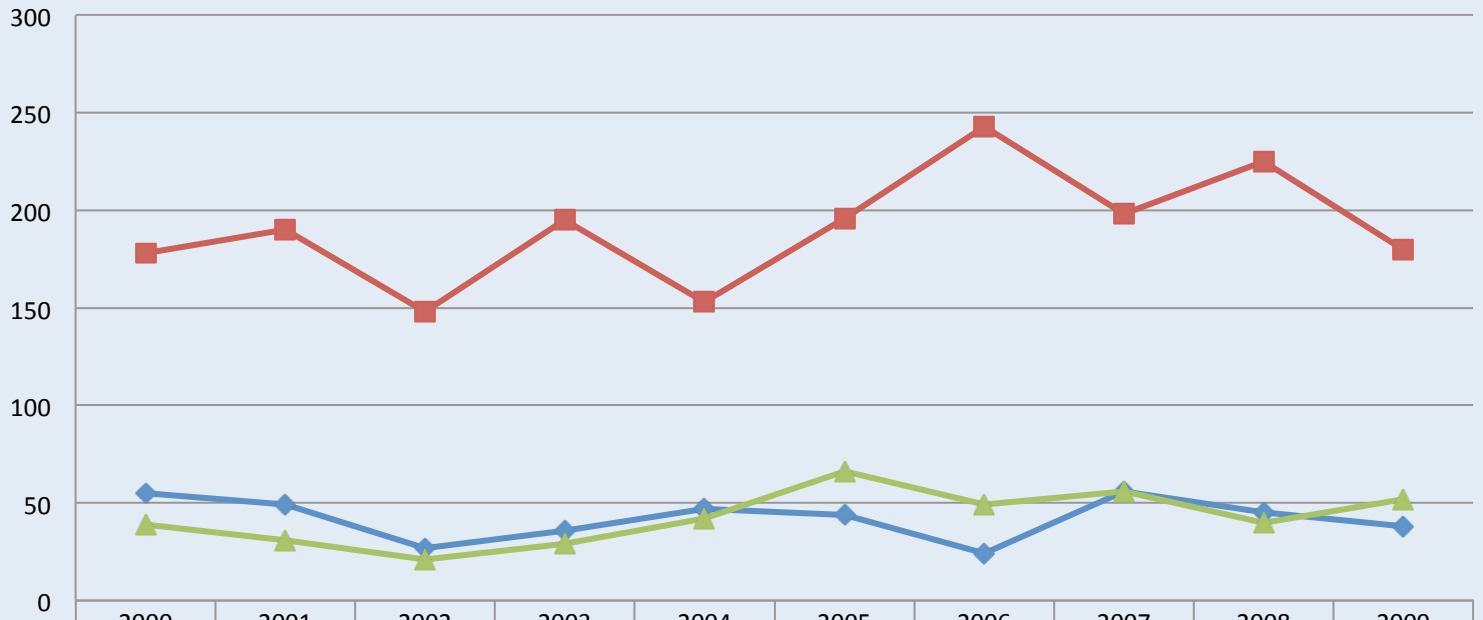
	2000	2001	2002	2003	2004	2005	2006	2007	2008	2009
Violent Crime	228	211	228	278	278	255	317	332	340	330
Property Crime	2169	1923	1925	2054	1893	1682	1764	1917	2094	1973
Drug Offenses	468	535	427	568	573	653	714	755	696	663

Ellendale Crime Trend 2000-2009



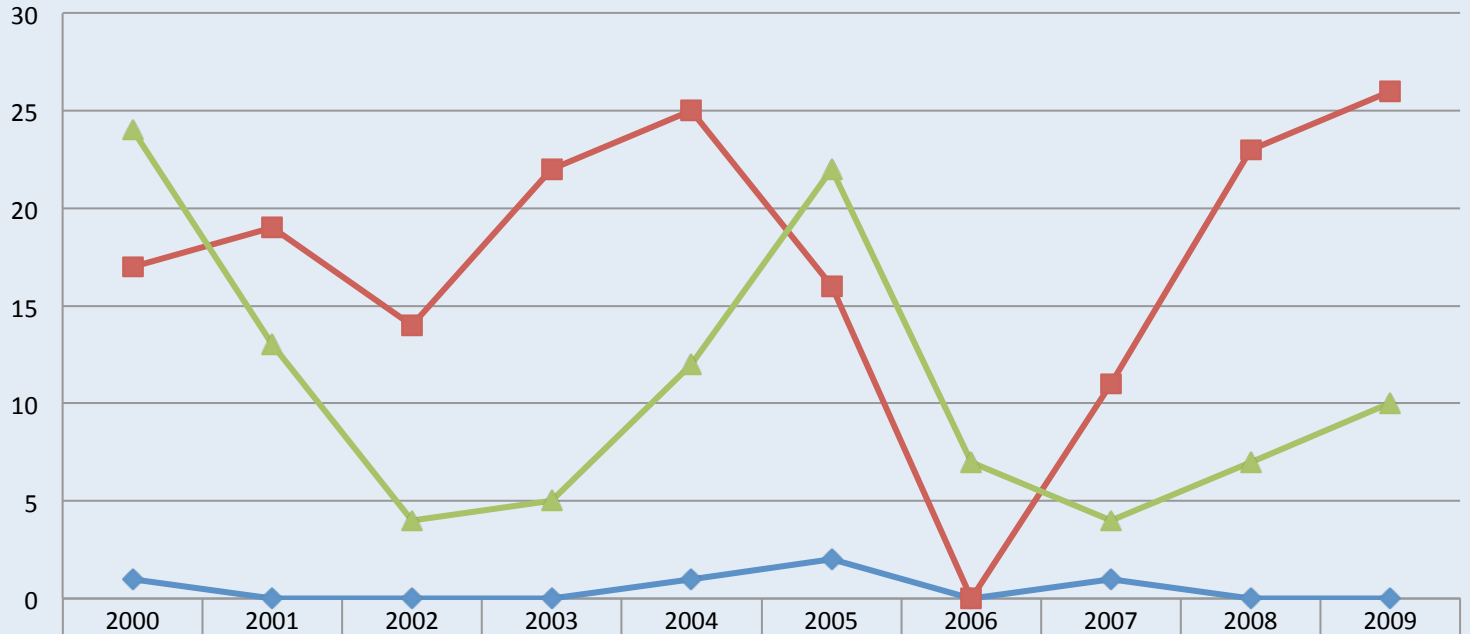
◆ Violent Crime	1	0	4	2	0	0	2	0	0	1
■ Property Crime	11	12	11	9	12	8	6	0	0	1
▲ Drug Offenses	2	1	1	0	0	0	0	0	0	11

Elsmere Crime Trend 2000-2009



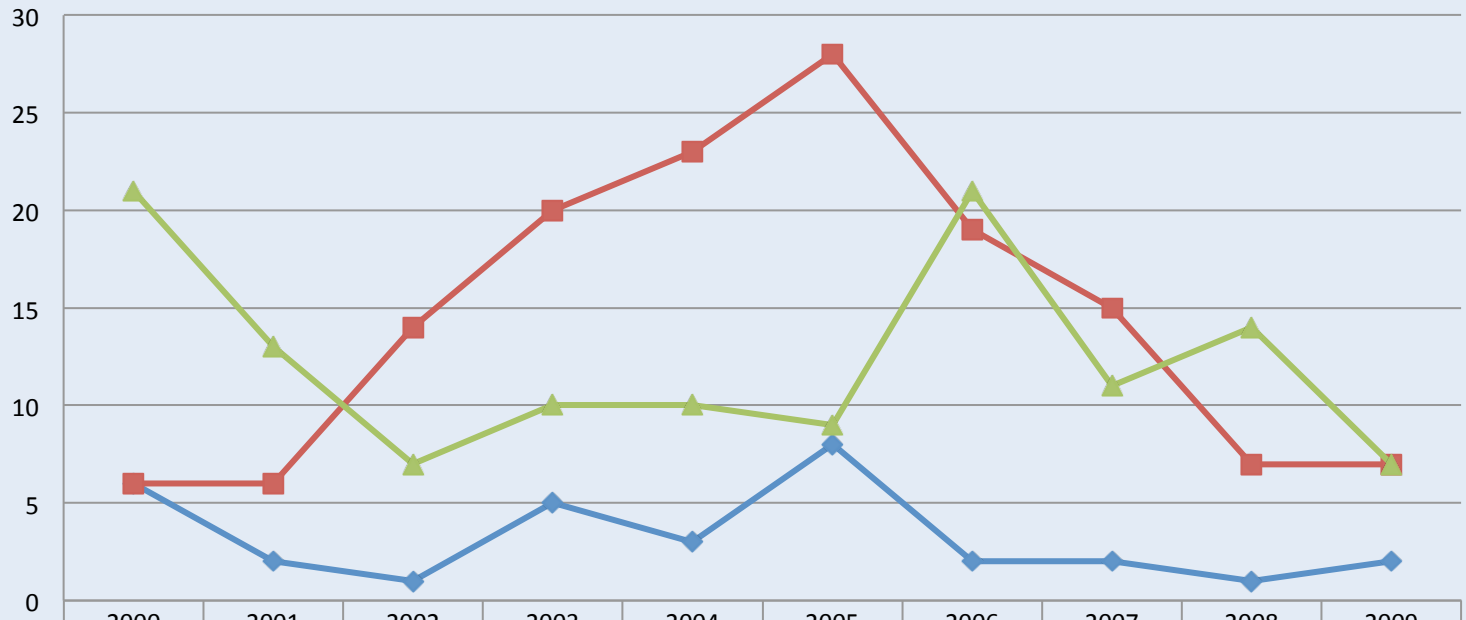
	2000	2001	2002	2003	2004	2005	2006	2007	2008	2009
Violent Crime	55	49	27	36	47	44	24	56	45	38
Property Crime	178	190	148	195	153	196	243	198	225	180
Drug Offenses	39	31	21	29	42	66	49	56	40	52

Felton Crime Trend 2000-2009



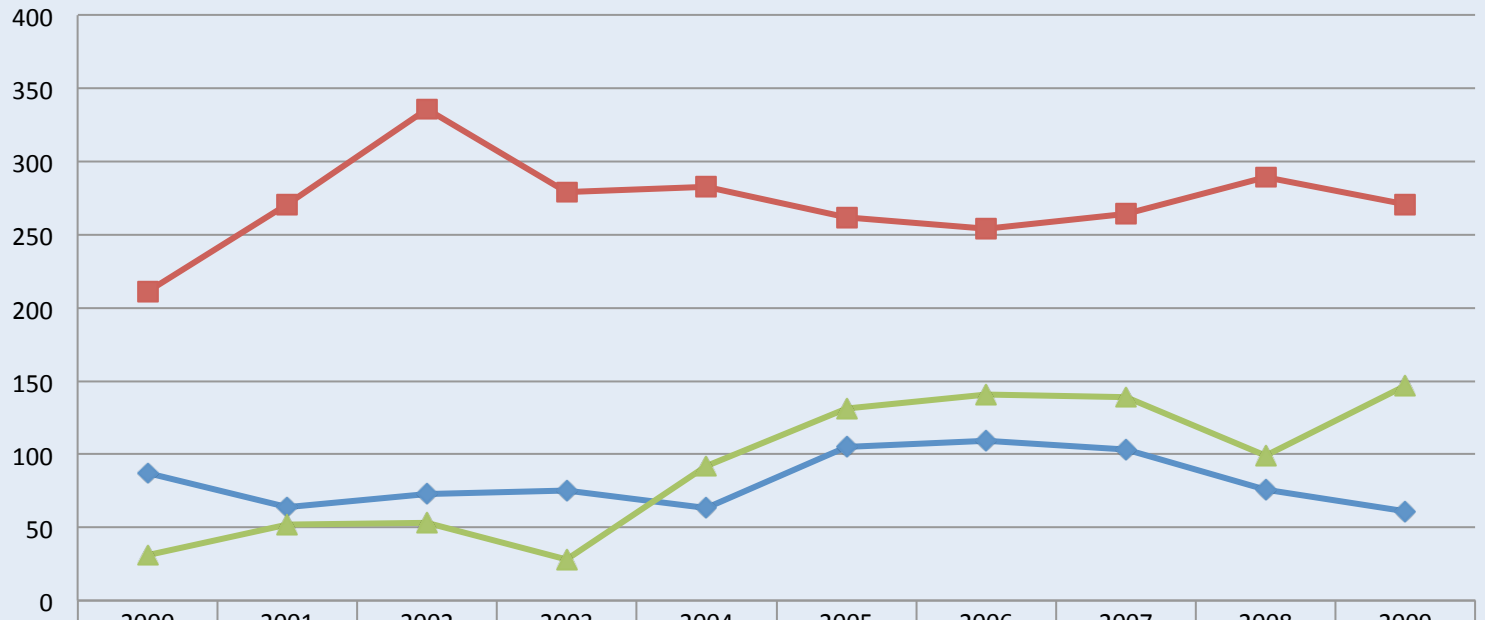
◆ Violent Crime	1	0	0	0	1	2	0	1	0	0
■ Property Crime	17	19	14	22	25	16	0	11	23	26
▲ Drug Offenses	24	13	4	5	12	22	7	4	7	10

Fenwick Island Crime Trend 2000-2009



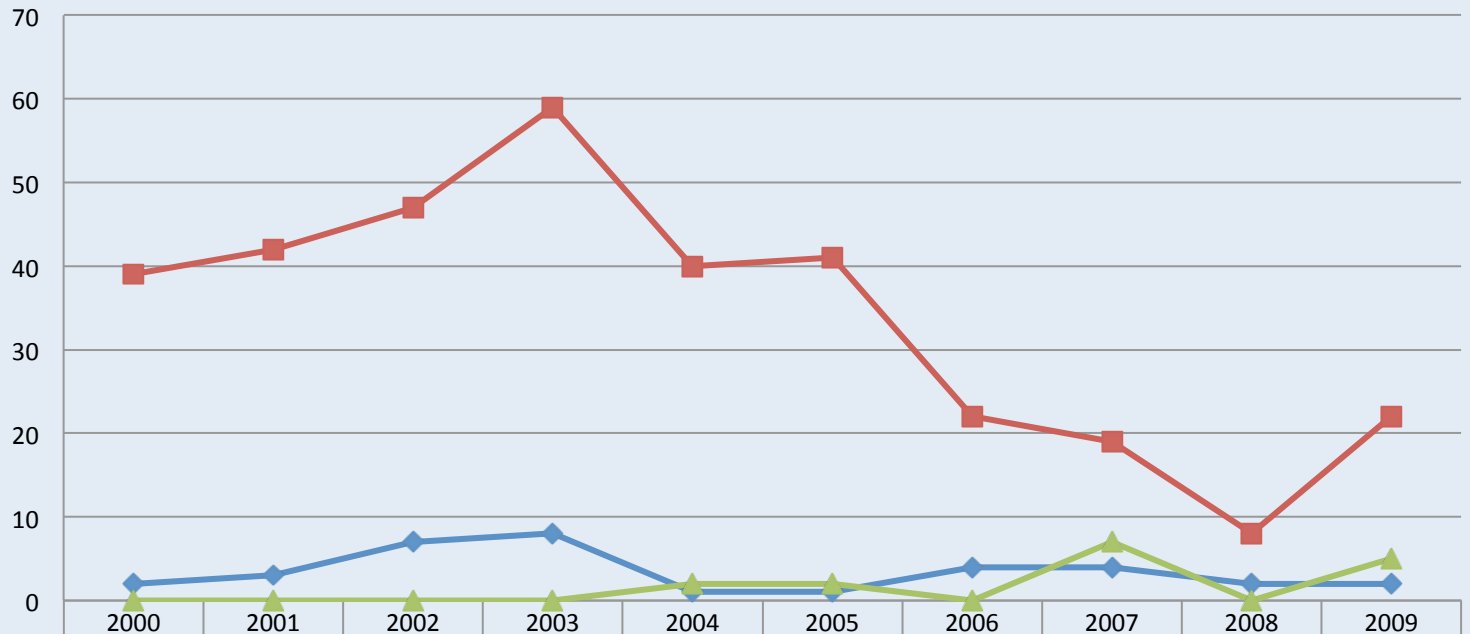
	2000	2001	2002	2003	2004	2005	2006	2007	2008	2009
Violent Crime	6	2	1	5	3	8	2	2	1	2
Property Crime	6	6	14	20	23	28	19	15	7	7
Drug Offenses	21	13	7	10	10	9	21	11	14	7

Georgetown Crime Trend 2000-2009



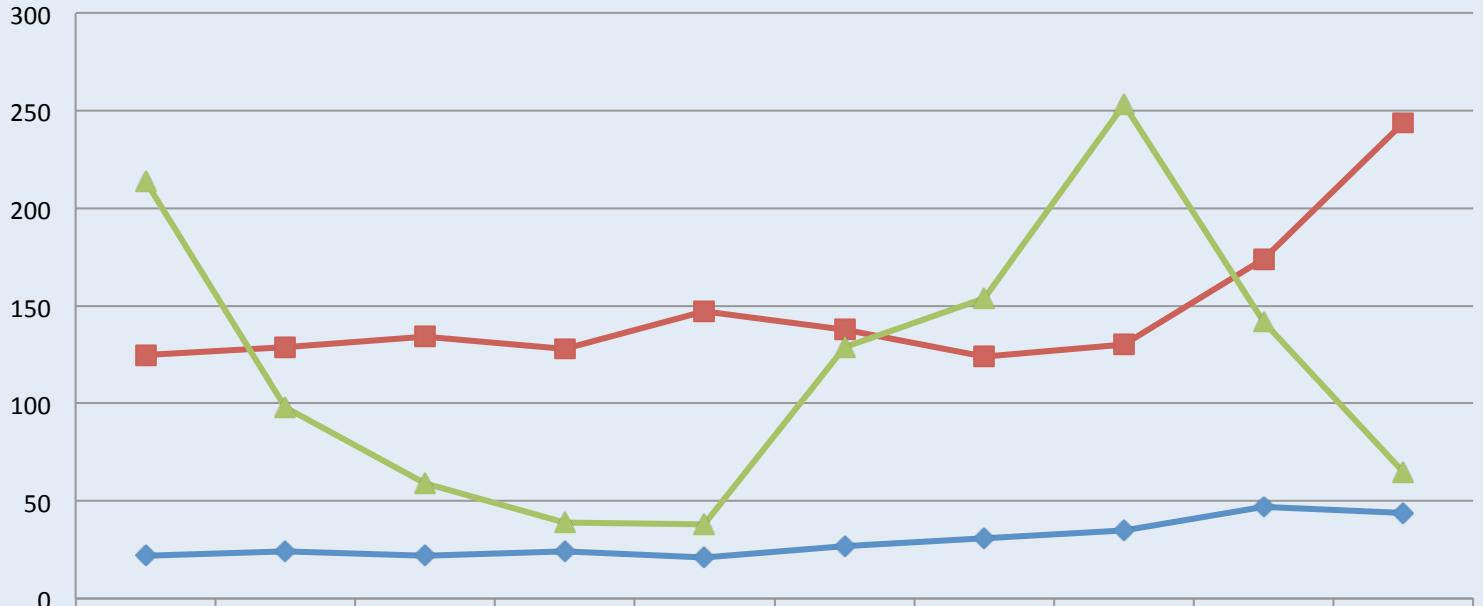
Violent Crime	87	64	73	75	63	105	109	103	76	61
Property Crime	211	271	336	279	283	262	254	264	289	271
Drug Offenses	31	52	53	28	92	131	141	139	99	147

Greenwood Crime Trend 2000-2009



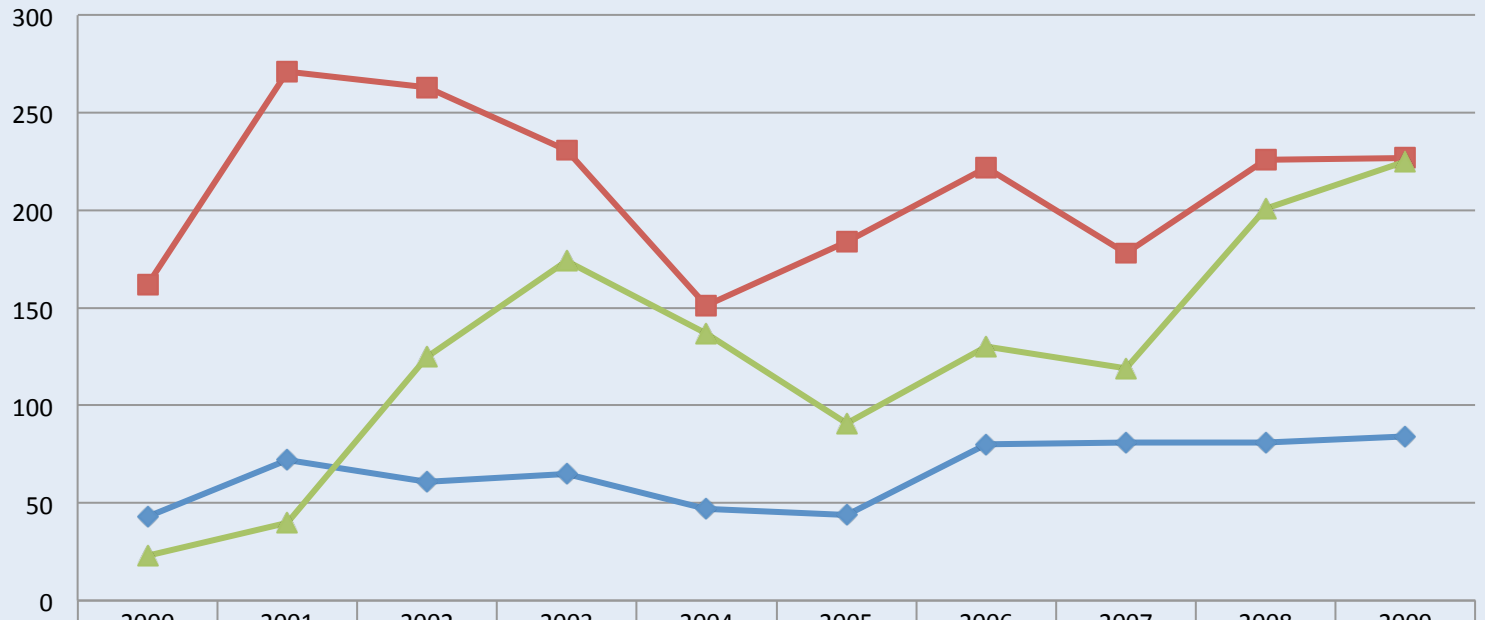
Violent Crime	2	3	7	8	1	1	4	4	2	2
Property Crime	39	42	47	59	40	41	22	19	8	22
Drug Offenses	0	0	0	0	2	2	0	7	0	5

Harrington Crime Trend 2000-2009



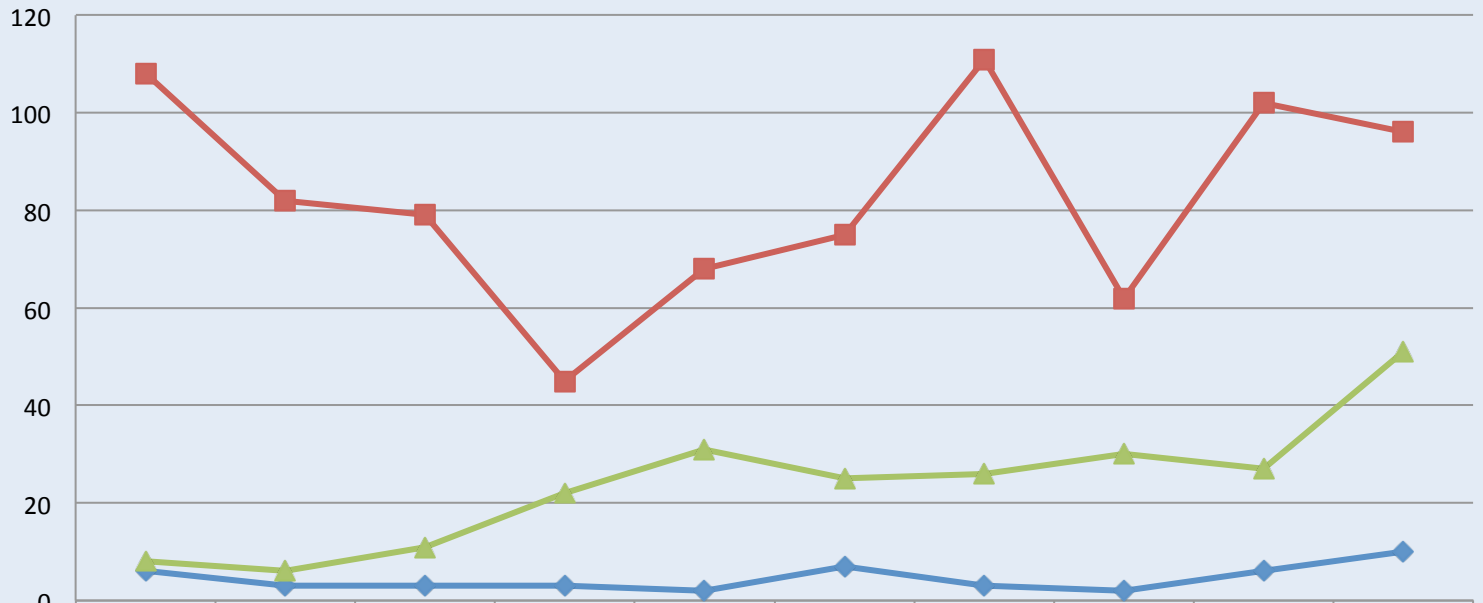
	2000	2001	2002	2003	2004	2005	2006	2007	2008	2009
Violent Crime	22	24	22	24	21	27	31	35	47	44
Property Crime	125	129	134	128	147	138	124	130	174	244
Drug Offenses	214	98	59	39	38	129	154	253	142	65

Laurel Crime Trend 2000-2009



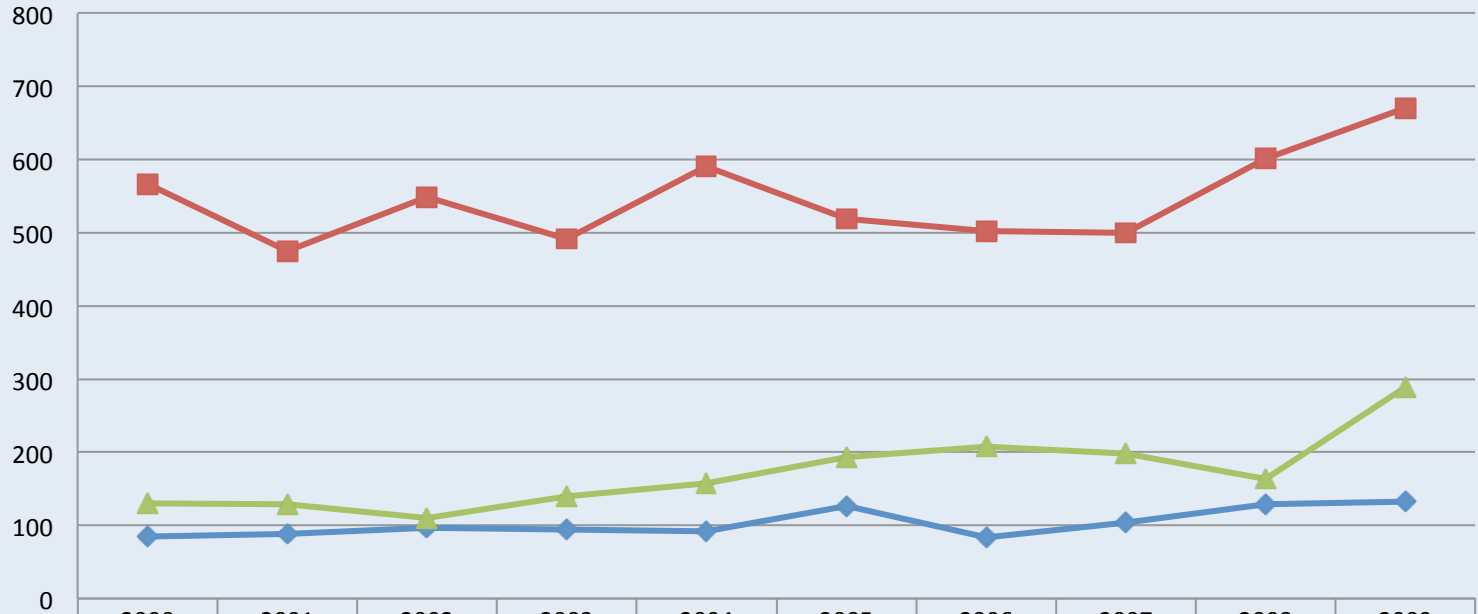
	2000	2001	2002	2003	2004	2005	2006	2007	2008	2009
Violent Crime	43	72	61	65	47	44	80	81	81	84
Property Crime	162	271	263	231	151	184	222	178	226	227
Drug Offenses	23	40	125	174	137	91	130	119	201	225

Lewes Crime Trend 2000-2009



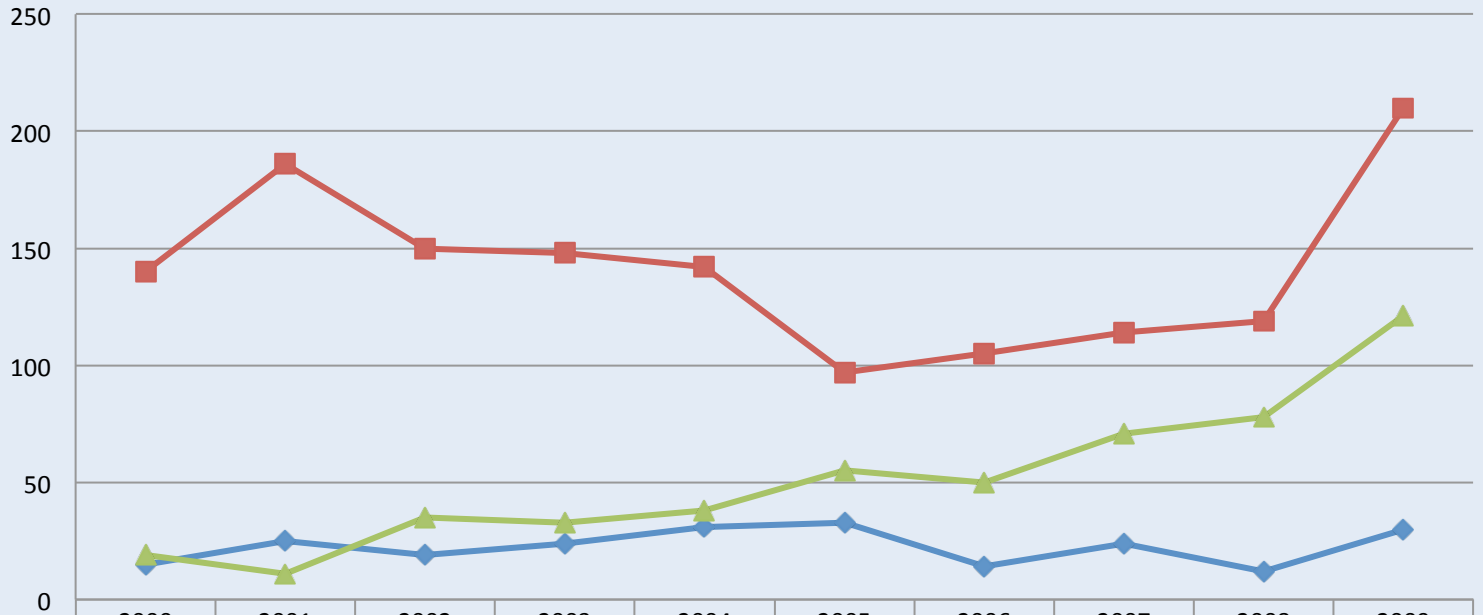
	2000	2001	2002	2003	2004	2005	2006	2007	2008	2009
Violent Crime	6	3	3	3	2	7	3	2	6	10
Property Crime	108	82	79	45	68	75	111	62	102	96
Drug Offenses	8	6	11	22	31	25	26	30	27	51

Milford Crime Trend 2000-2009



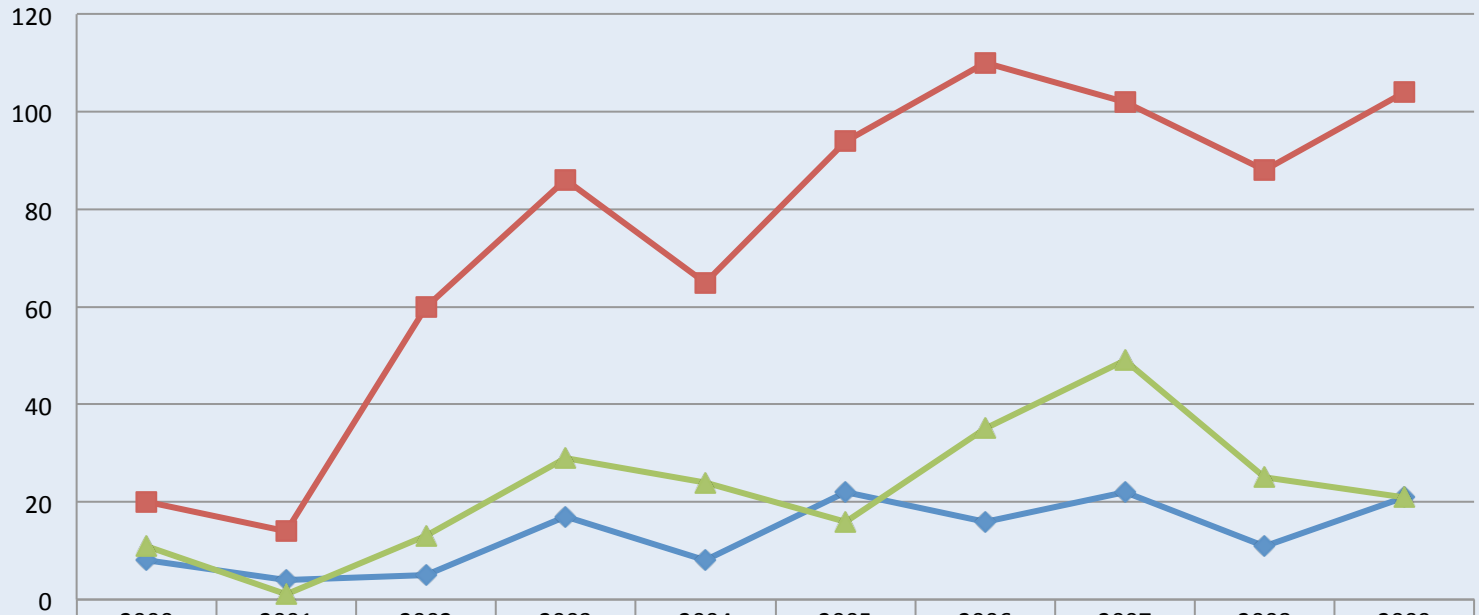
	2000	2001	2002	2003	2004	2005	2006	2007	2008	2009
Violent Crime	85	88	97	94	92	126	83	104	129	133
Property Crime	567	475	549	491	591	519	502	500	601	670
Drug Offenses	130	129	110	140	158	193	207	198	163	289

Milsboro Crime Trend 2000-2009



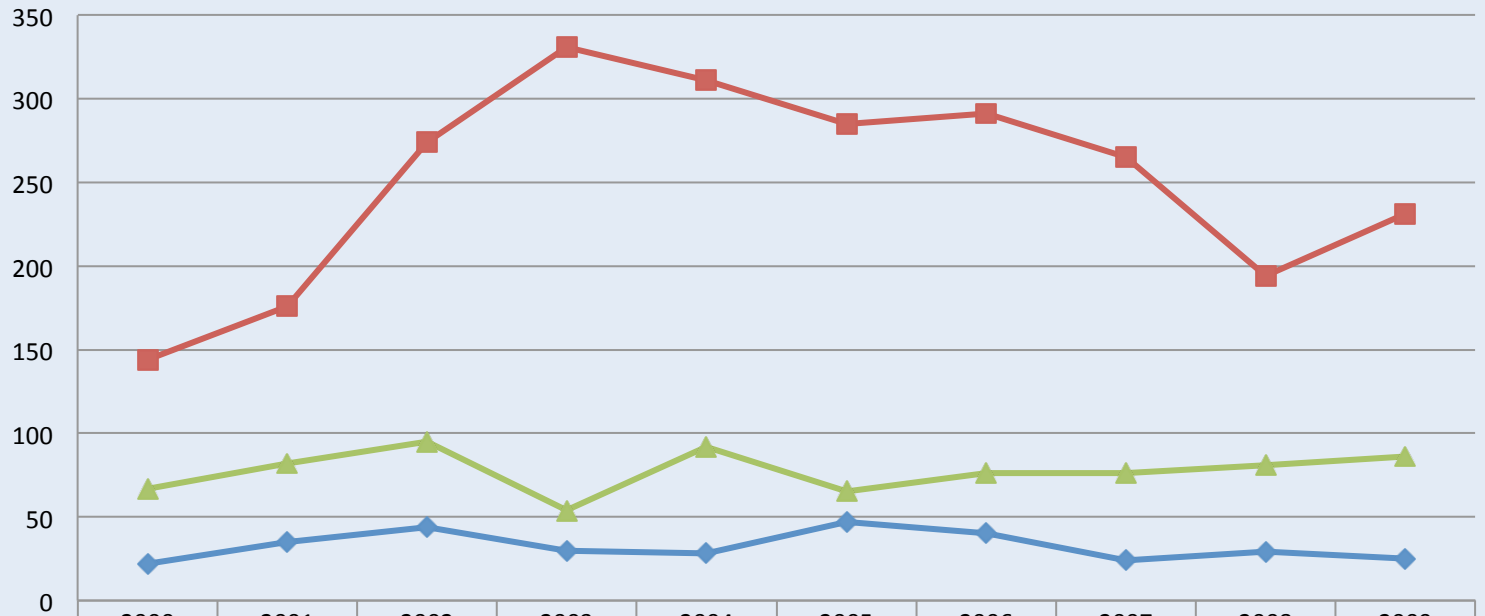
	2000	2001	2002	2003	2004	2005	2006	2007	2008	2009
Violent Crime	15	25	19	24	31	33	14	24	12	30
Property Crime	140	186	150	148	142	97	105	114	119	210
Drug Offenses	19	11	35	33	38	55	50	71	78	121

Milton Crime Trend 2000-2009



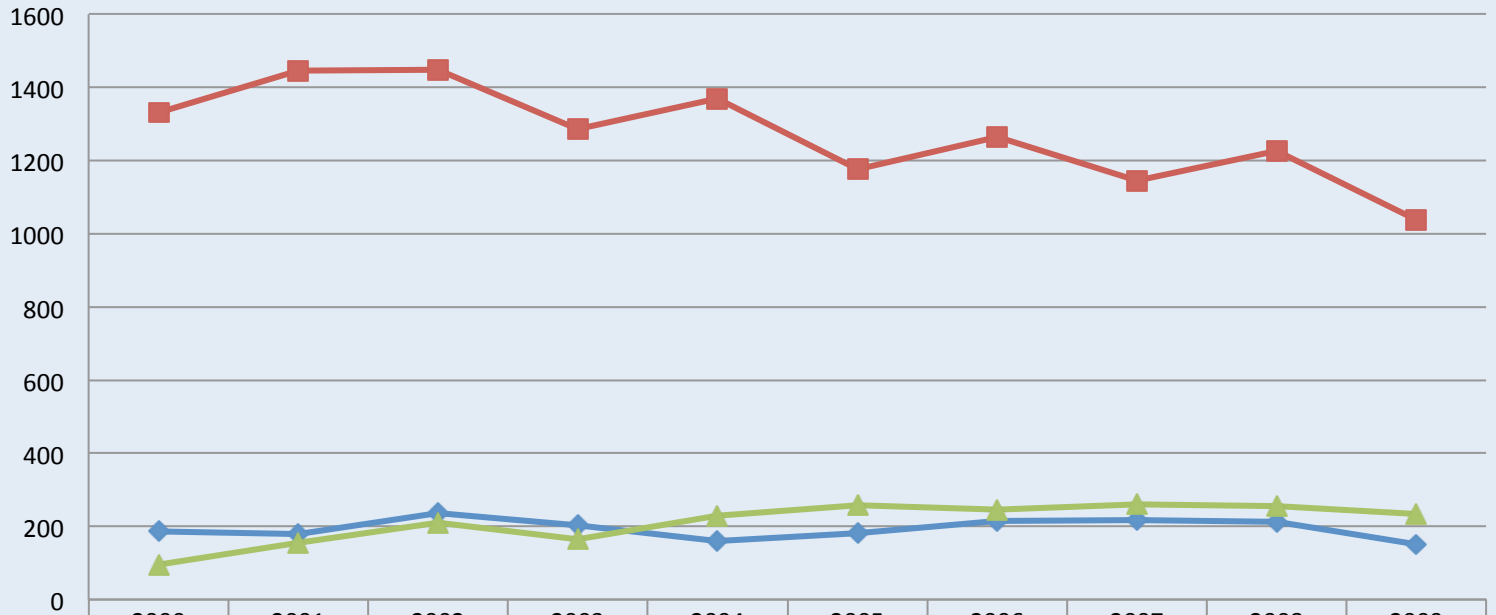
	2000	2001	2002	2003	2004	2005	2006	2007	2008	2009
Violent Crime	8	4	5	17	8	22	16	22	11	21
Property Crime	20	14	60	86	65	94	110	102	88	104
Drug Offenses	11	1	13	29	24	16	35	49	25	21

City of New Castle Crime Trend 2000-2009



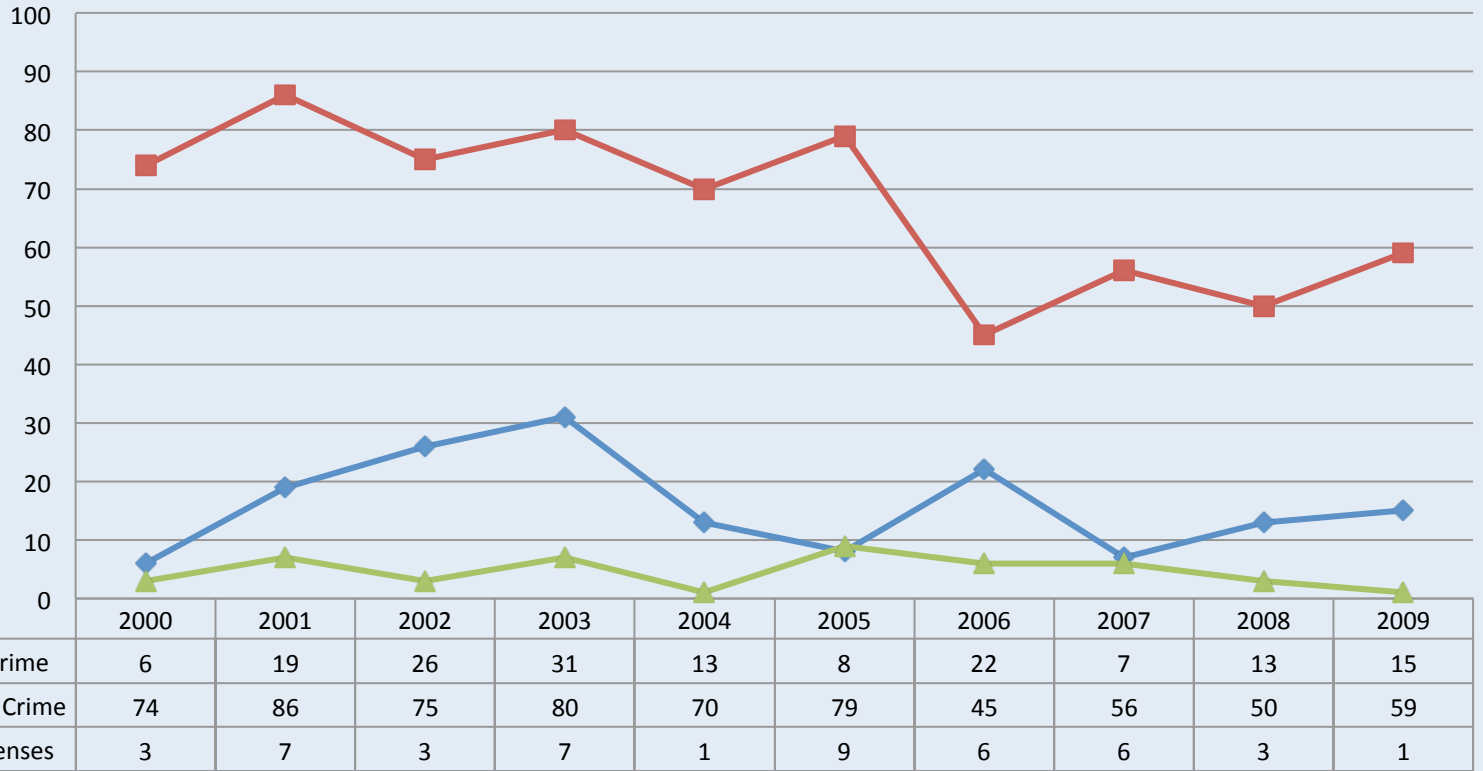
	2000	2001	2002	2003	2004	2005	2006	2007	2008	2009
Violent Crime	22	35	44	30	28	47	40	24	29	25
Property Crime	144	176	274	331	311	285	291	265	194	231
Drug Offenses	67	82	95	54	92	65	76	76	81	86

Newark Crime Trend 2000-2009

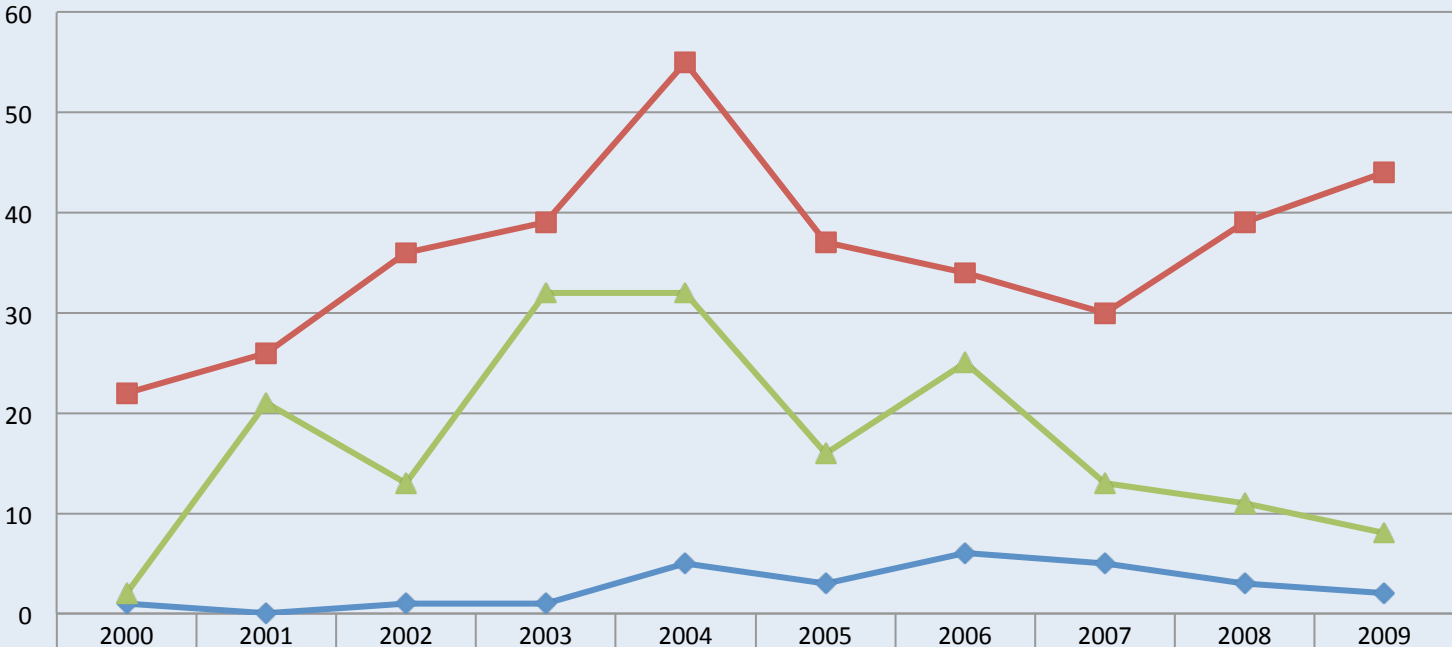


	2000	2001	2002	2003	2004	2005	2006	2007	2008	2009
Violent Crime	186	178	236	203	159	182	214	217	212	151
Property Crime	1332	1446	1449	1285	1369	1175	1265	1146	1227	1038
Drug Offenses	95	154	209	165	228	257	246	260	255	234

Newport Crime Trend 2000-2009

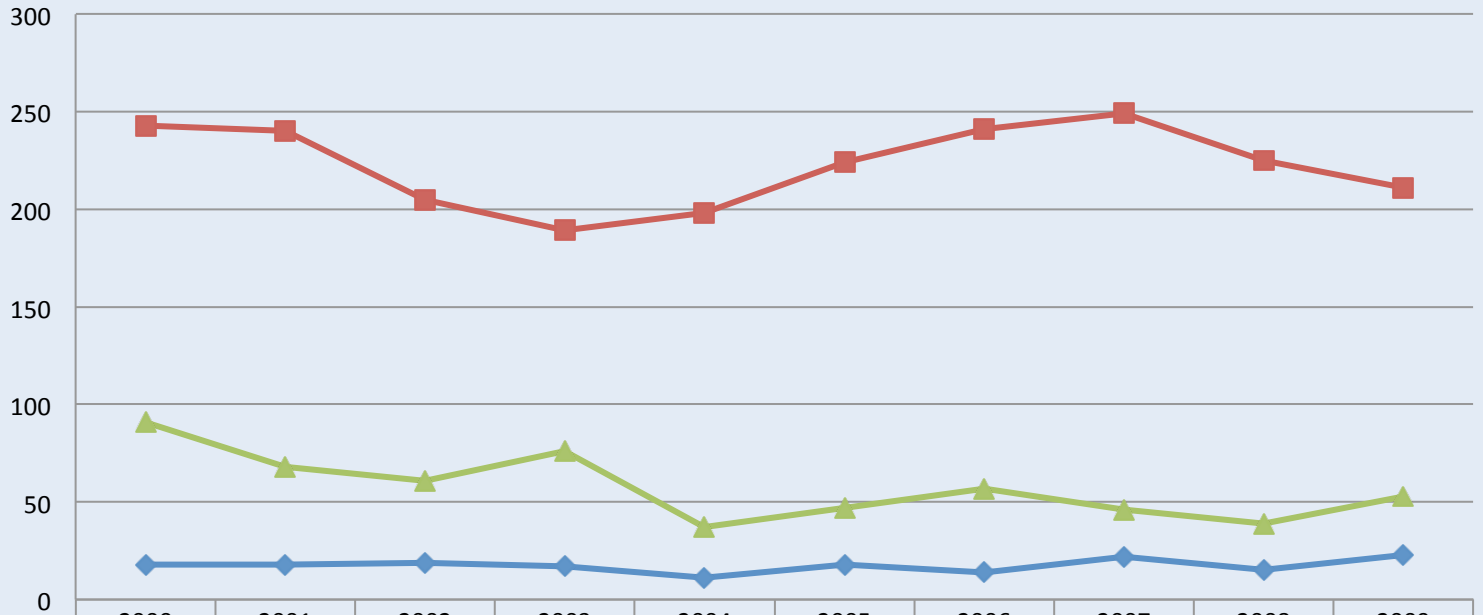


Oceanview Crime Trend 2000-2009



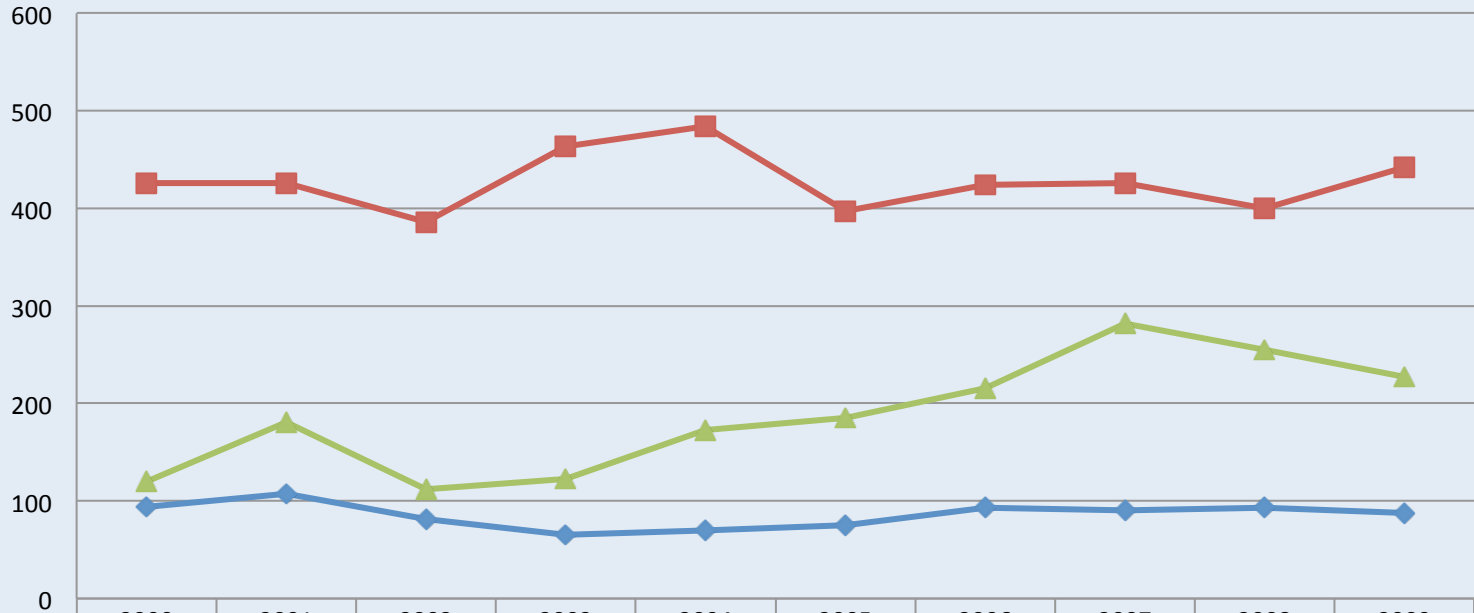
◆ Violent Crime	1	0	1	1	5	3	6	5	3	2
■ Property Crime	22	26	36	39	55	37	34	30	39	44
▲ Drug Offenses	2	21	13	32	32	16	25	13	11	8

Rehoboth Crime Trend 2000-2009



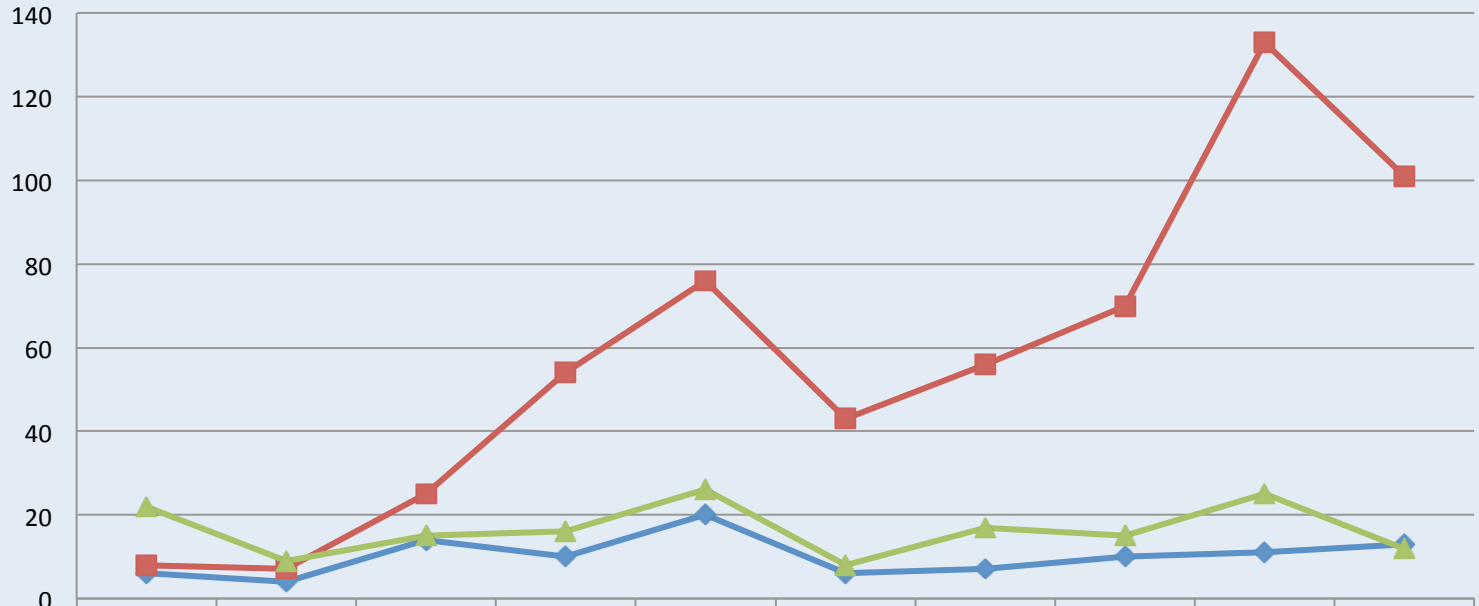
	2000	2001	2002	2003	2004	2005	2006	2007	2008	2009
Violent Crime	18	18	19	17	11	18	14	22	15	23
Property Crime	243	240	205	189	198	224	241	249	225	211
Drug Offenses	91	68	61	76	37	47	57	46	39	53

Seaford Crime Trend 2000-2009



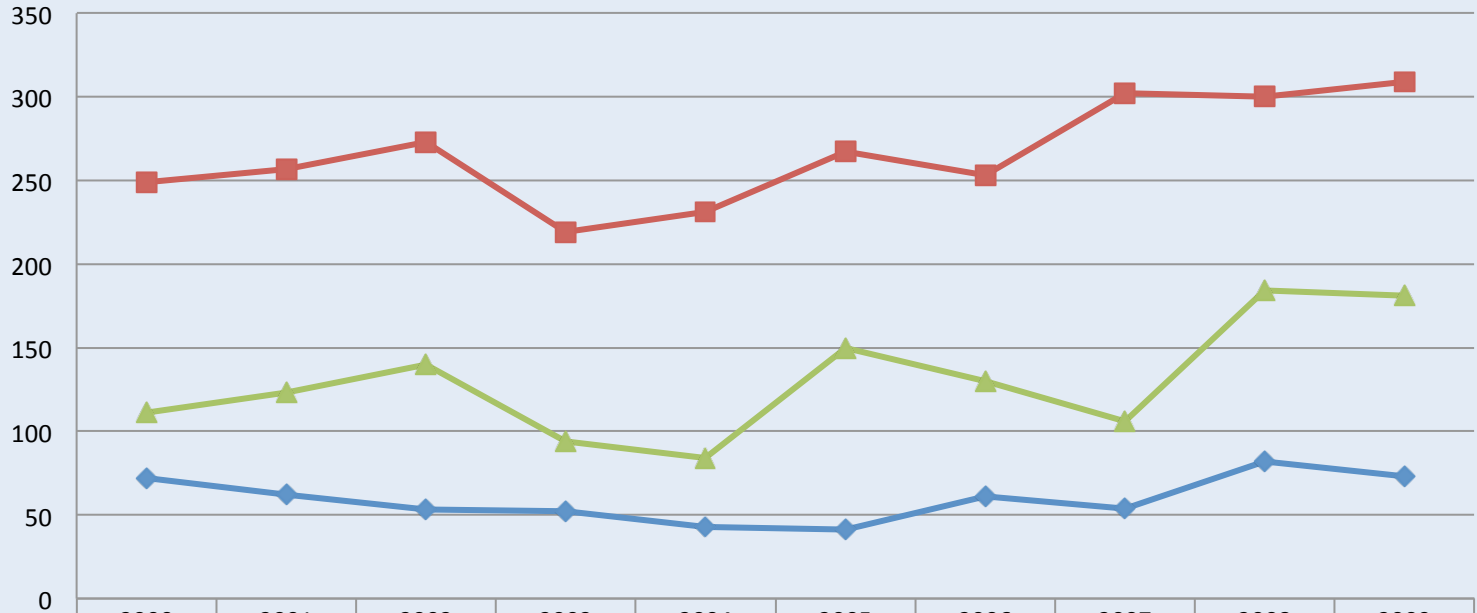
	2000	2001	2002	2003	2004	2005	2006	2007	2008	2009
Violent Crime	94	107	81	65	70	75	93	90	93	88
Property Crime	426	426	386	463	484	397	424	426	400	442
Drug Offenses	120	181	112	123	173	185	216	282	255	227

Selbyville Crime Trend 2000-2009



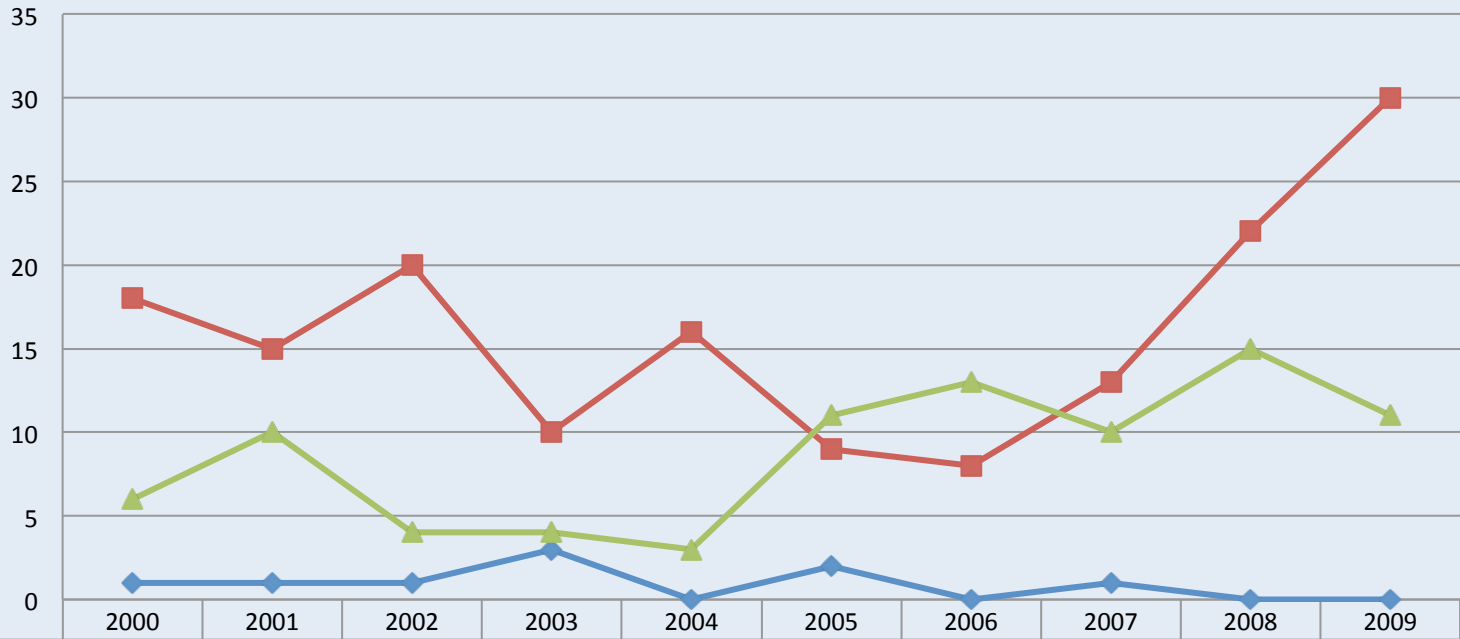
	2000	2001	2002	2003	2004	2005	2006	2007	2008	2009
Violent Crime	6	4	14	10	20	6	7	10	11	13
Property Crime	8	7	25	54	76	43	56	70	133	101
Drug Offenses	22	9	15	16	26	8	17	15	25	12

Smyrna Crime Trend 2000-2009



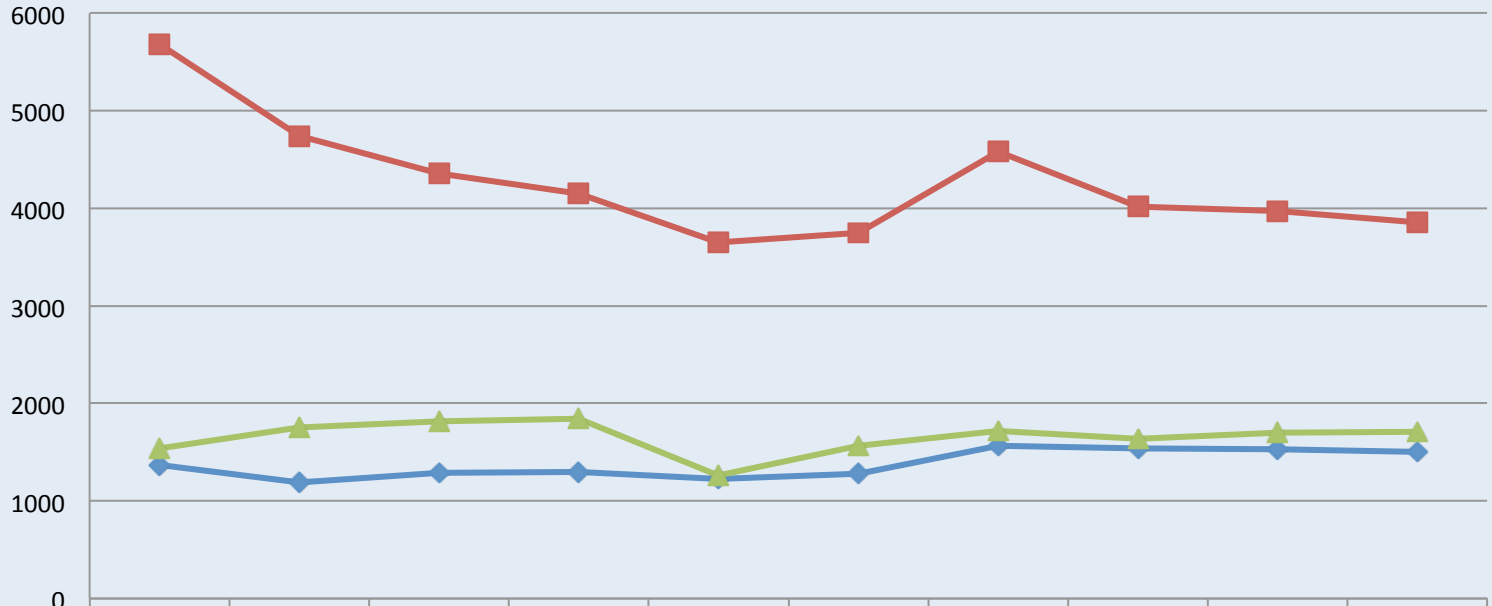
	2000	2001	2002	2003	2004	2005	2006	2007	2008	2009
Violent Crime	72	62	53	52	43	41	61	54	82	73
Property Crime	249	257	273	219	231	267	253	302	300	309
Drug Offenses	111	123	140	94	84	150	130	106	184	181

South Bethany Beach Crime Trend 2000-2009



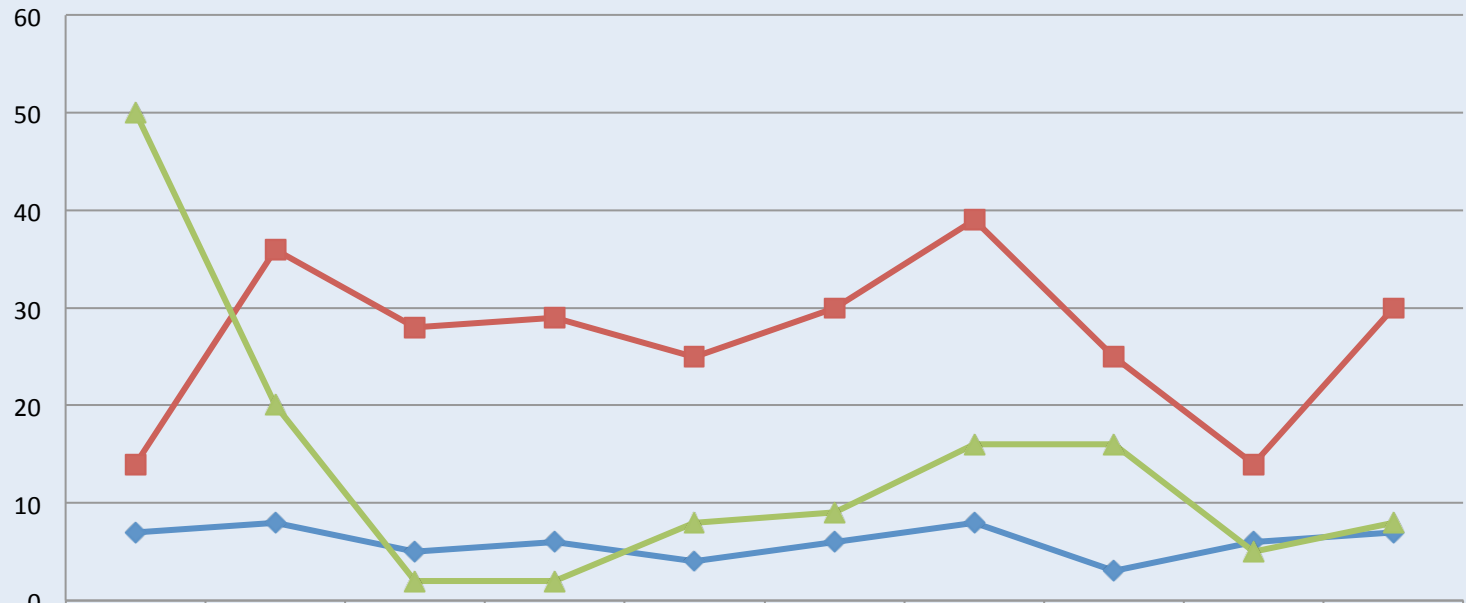
◆ Violent Crime	1	1	1	3	0	2	0	1	0	0
■ Property Crime	18	15	20	10	16	9	8	13	22	30
▲ Drug Offenses	6	10	4	4	3	11	13	10	15	11

Wilmington Crime Trend 2000-2009



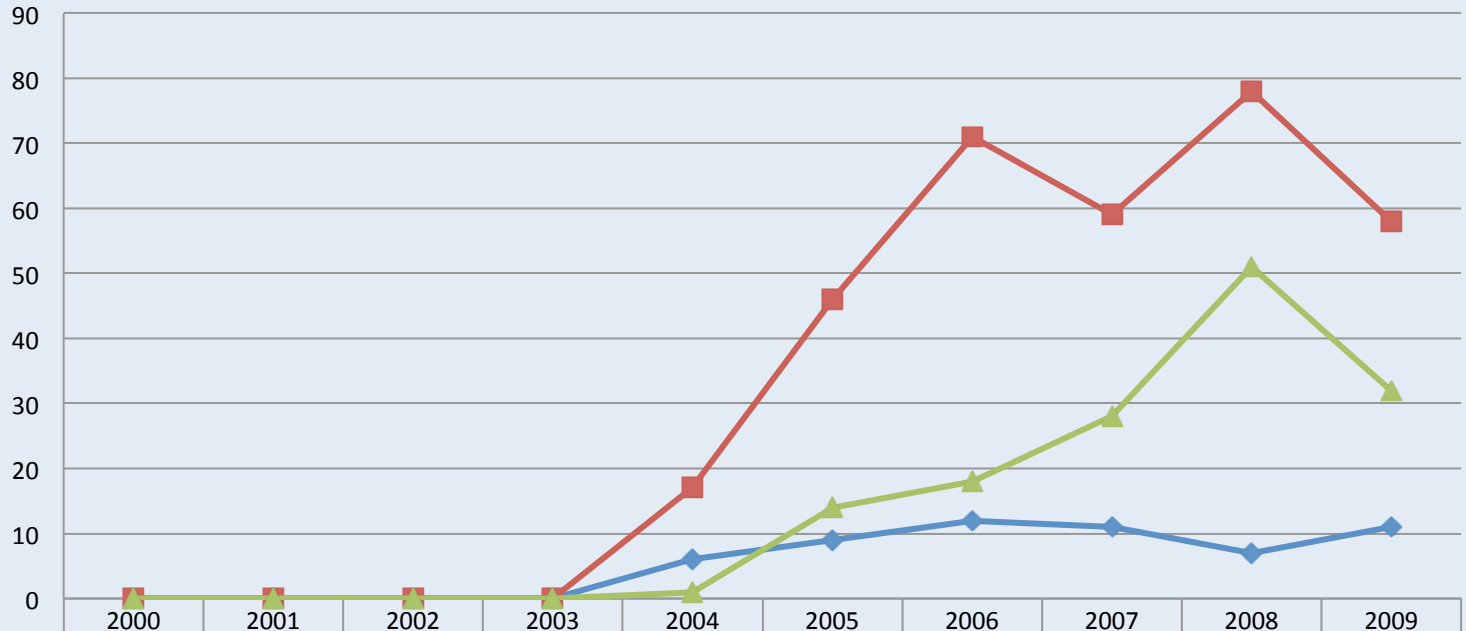
	2000	2001	2002	2003	2004	2005	2006	2007	2008	2009
Violent Crime	1373	1189	1291	1294	1230	1283	1570	1538	1532	1499
Property Crime	5678	4744	4356	4150	3648	3751	4578	4017	3973	3853
Drug Offenses	1540	1753	1820	1844	1262	1565	1720	1640	1699	1706

Wyoming Crime Trend 2000-2009



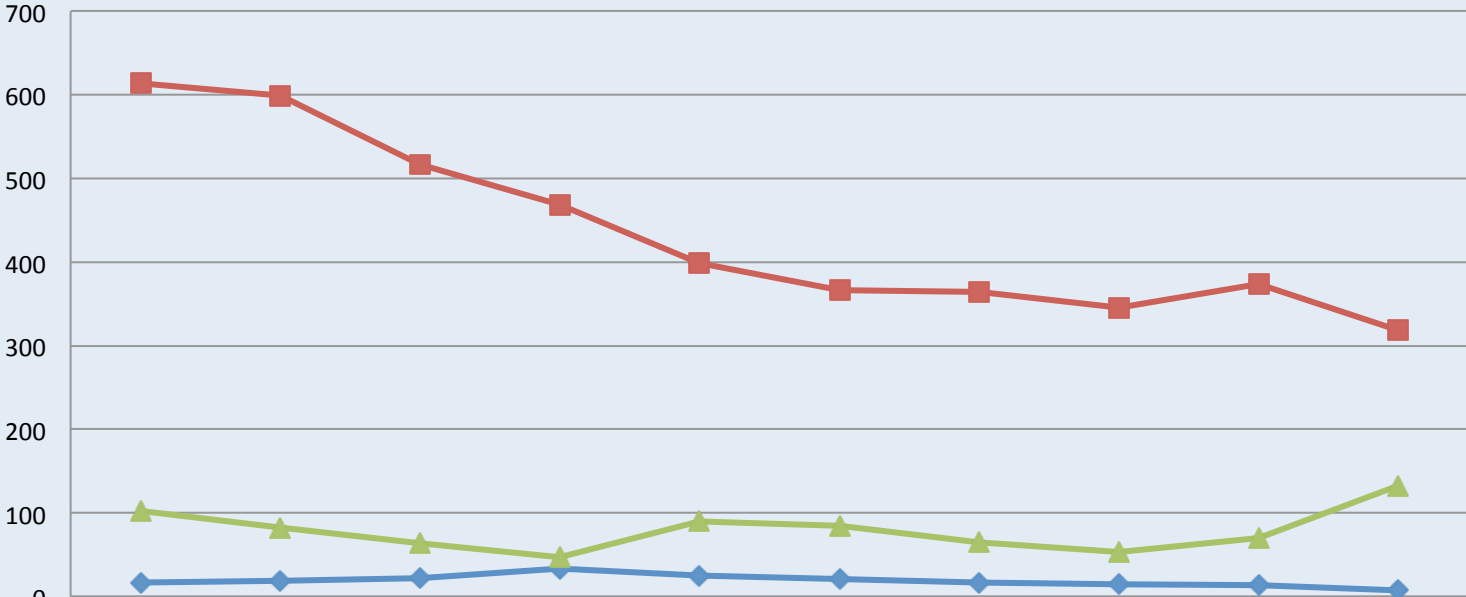
	2000	2001	2002	2003	2004	2005	2006	2007	2008	2009
Violent Crime	7	8	5	6	4	6	8	3	6	7
Property Crime	14	36	28	29	25	30	39	25	14	30
Drug Offenses	50	20	2	2	8	9	16	16	5	8

Delaware State University Crime Trend 2000-2009



Violent Crime	0	0	0	0	6	9	12	11	7	11
Property Crime	0	0	0	0	17	46	71	59	78	58
Drug Offenses	0	0	0	0	1	14	18	28	51	32

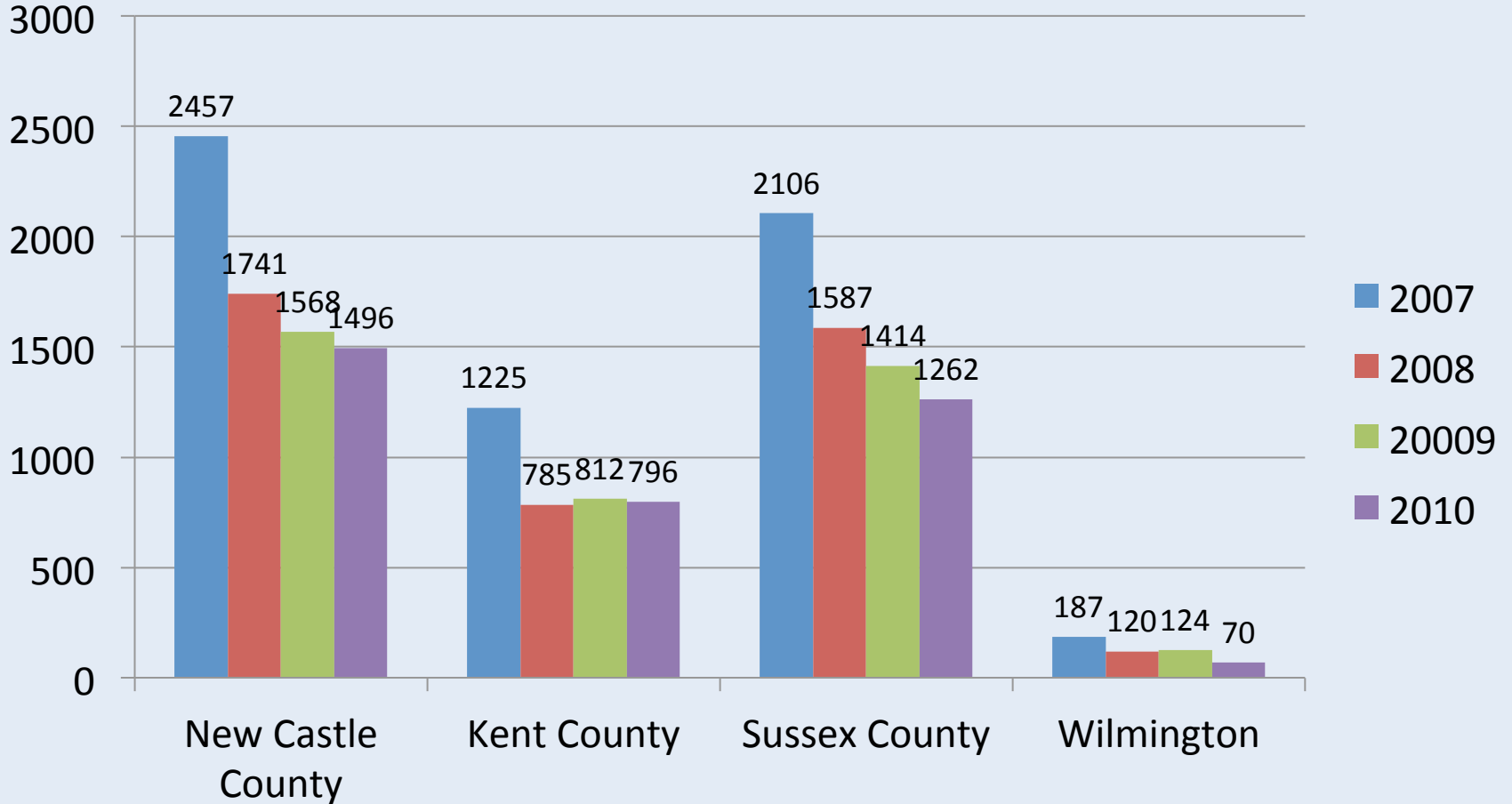
University of Delaware Crime Trend 2000-2009



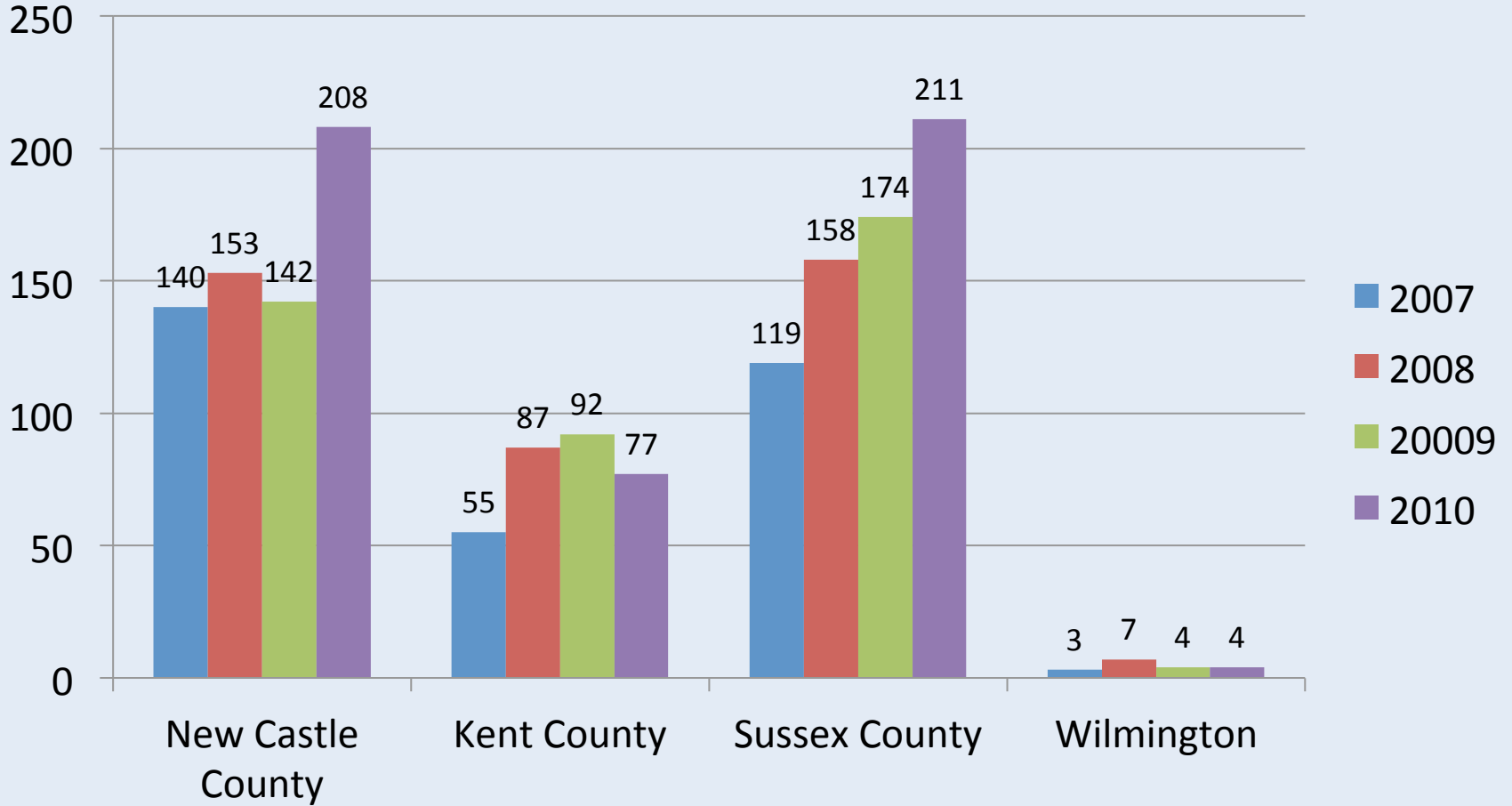
	2000	2001	2002	2003	2004	2005	2006	2007	2008	2009
Violent Crime	17	19	22	33	25	21	17	15	14	7
Property Crime	614	599	517	469	399	366	364	346	374	318
Drug Offenses	102	83	64	47	90	85	65	53	70	133

State Police Arrest Data for DUI 2007-2010

State Police DUI Arrests for Alcohol 2007-2010

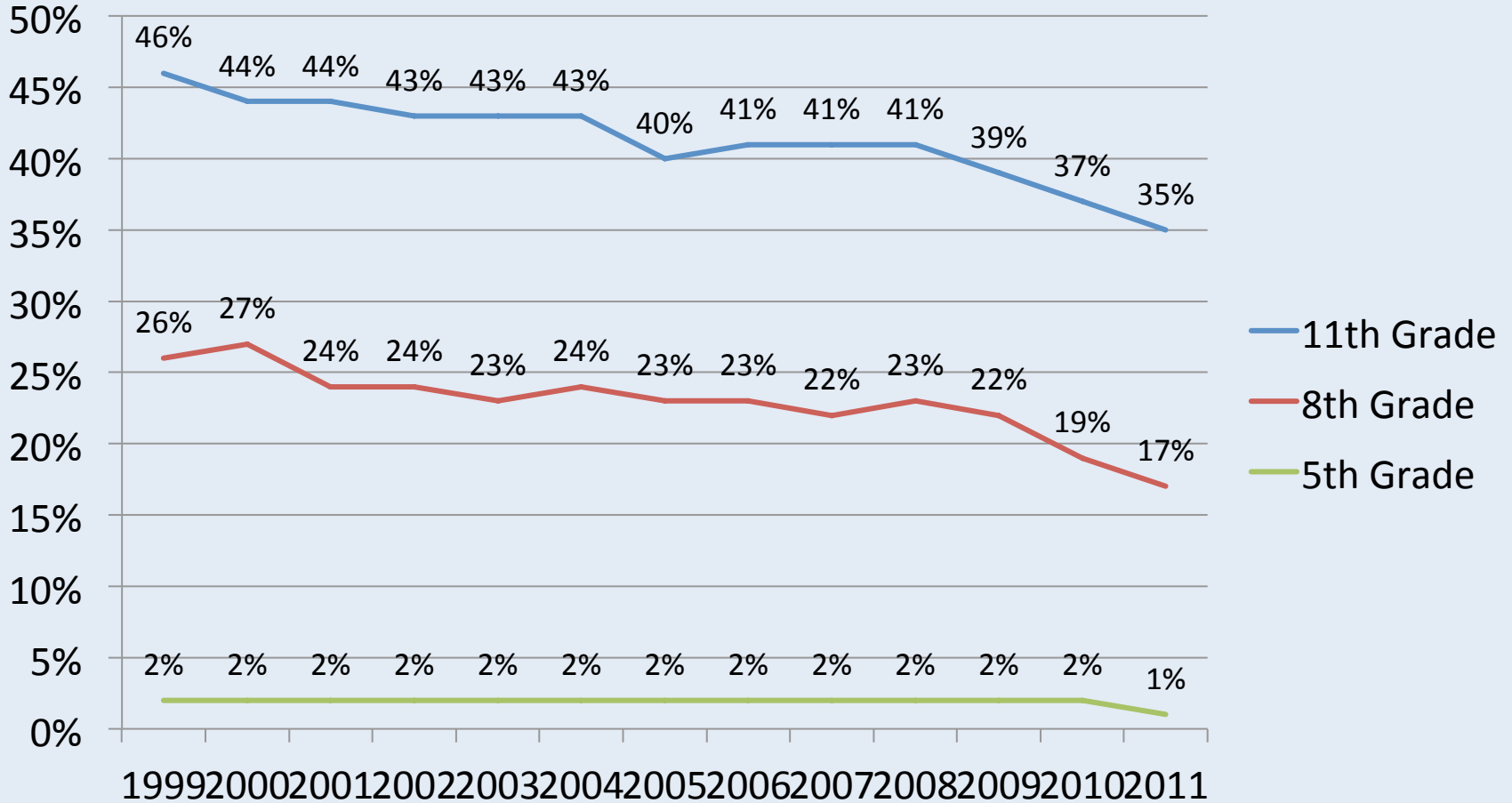


State Police DUI Arrests for Drugs 2007-2010

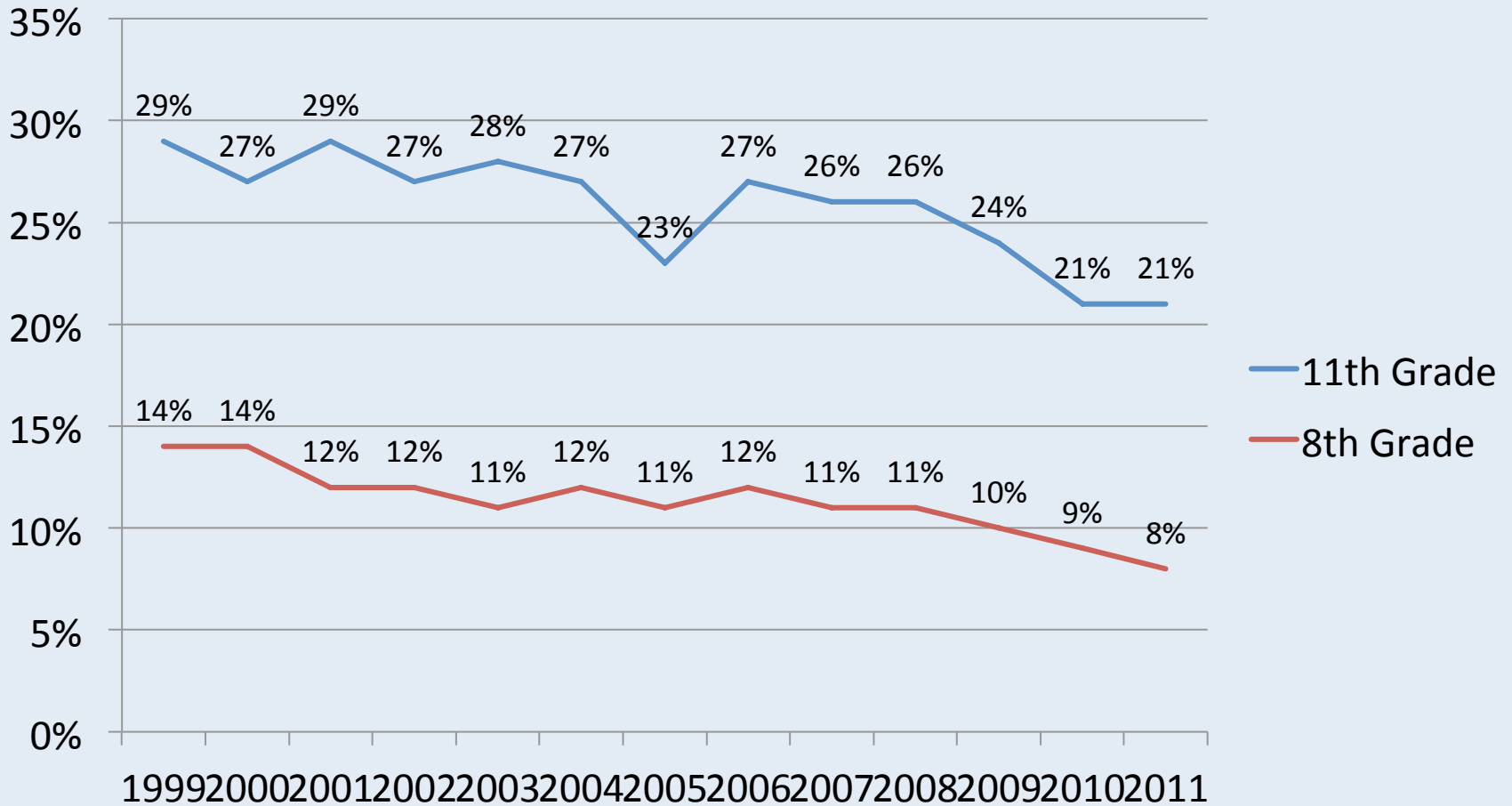


Delaware School Survey Trends through 2011

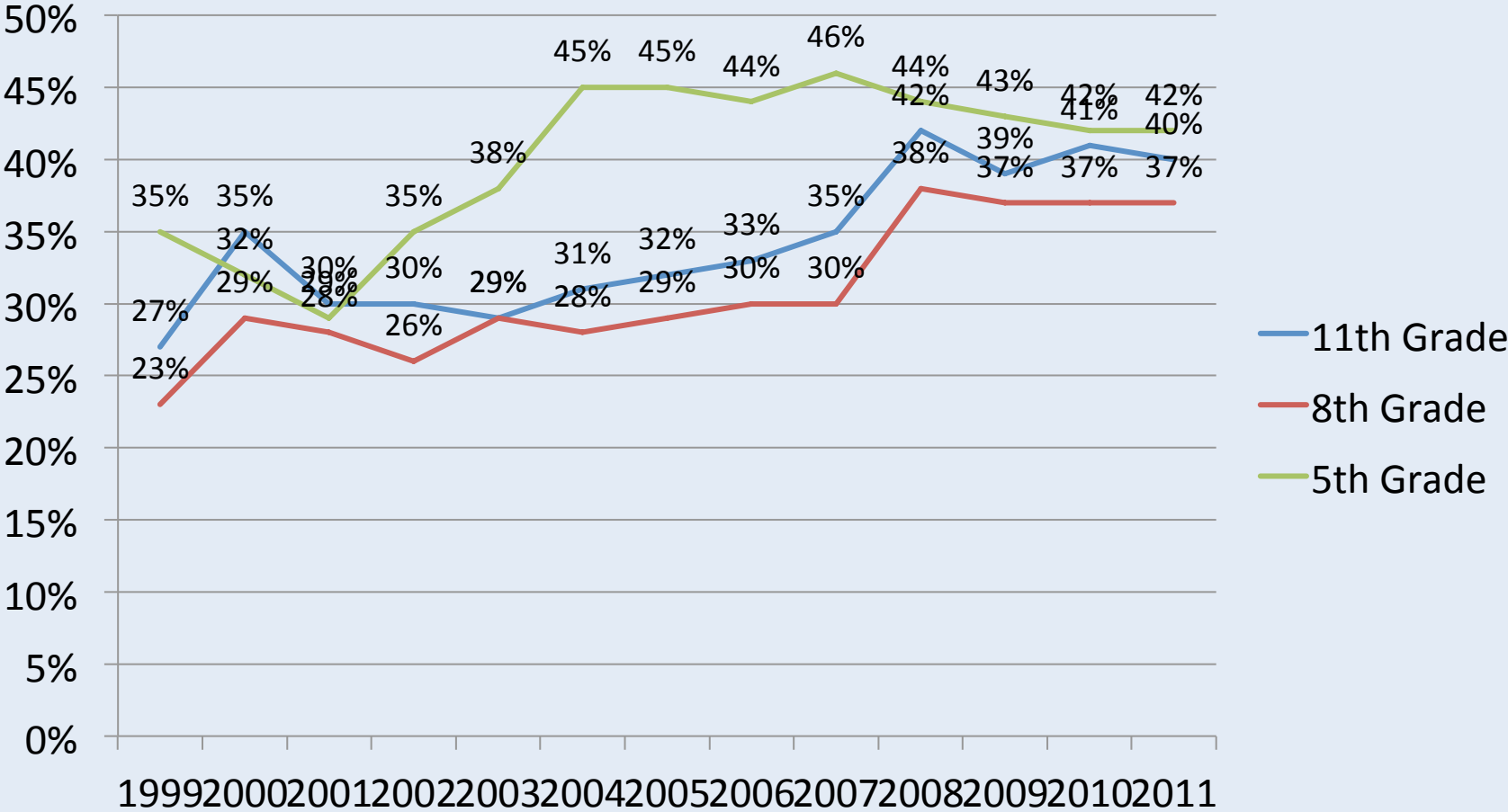
Past 30 Day Alcohol Use



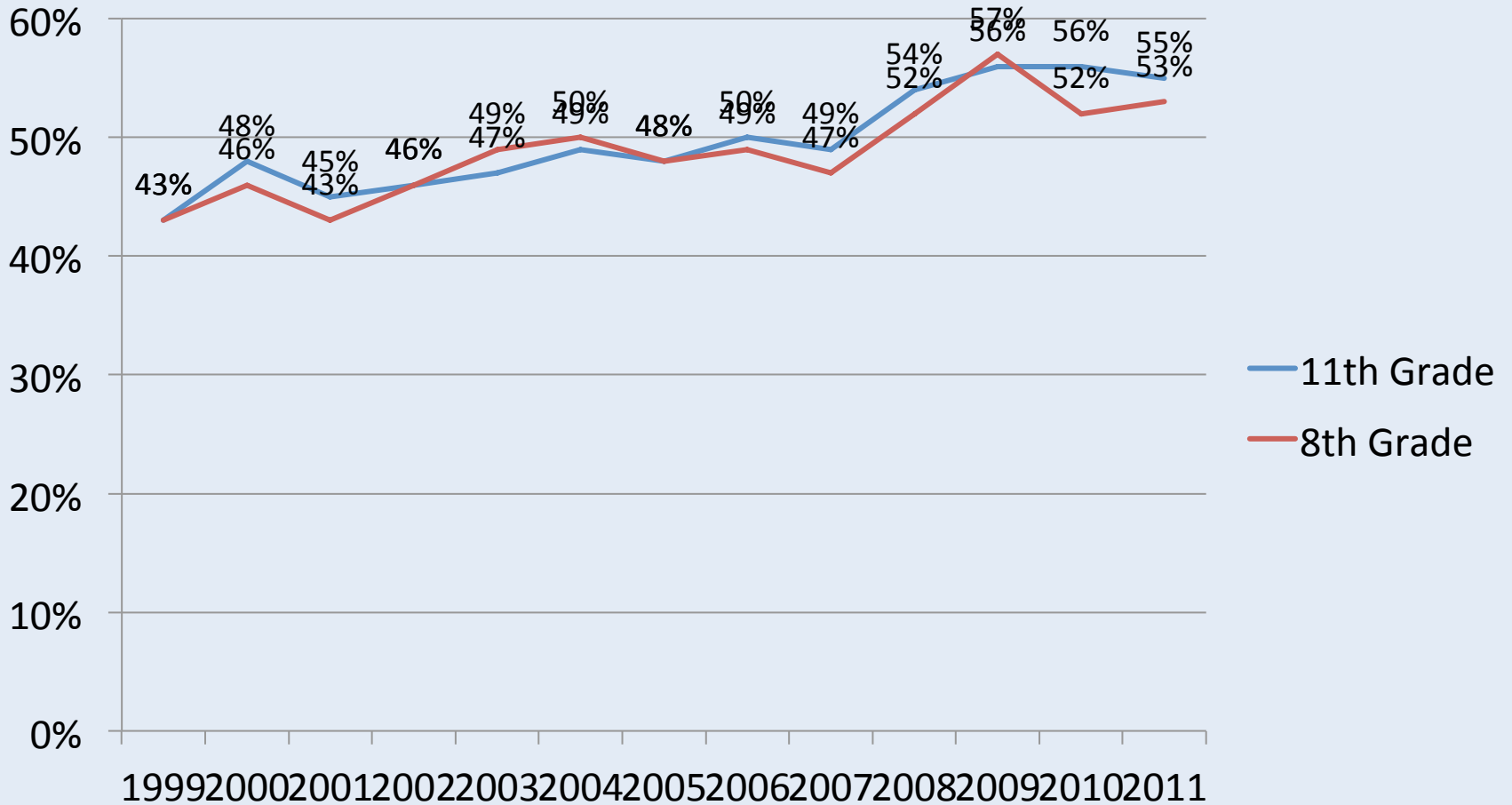
Binge Use in Past Two Weeks



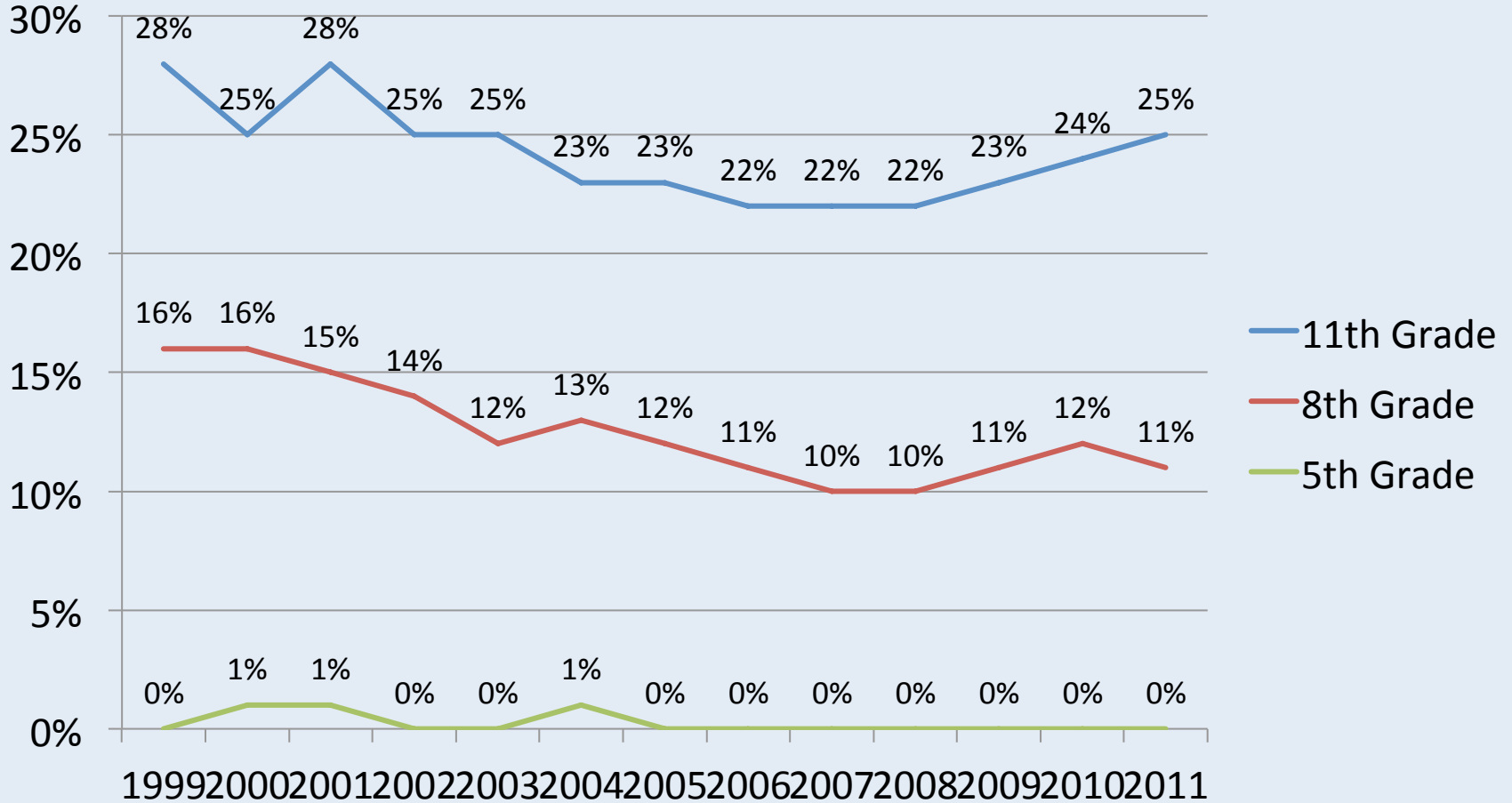
Perceived Risk in Drinking Daily



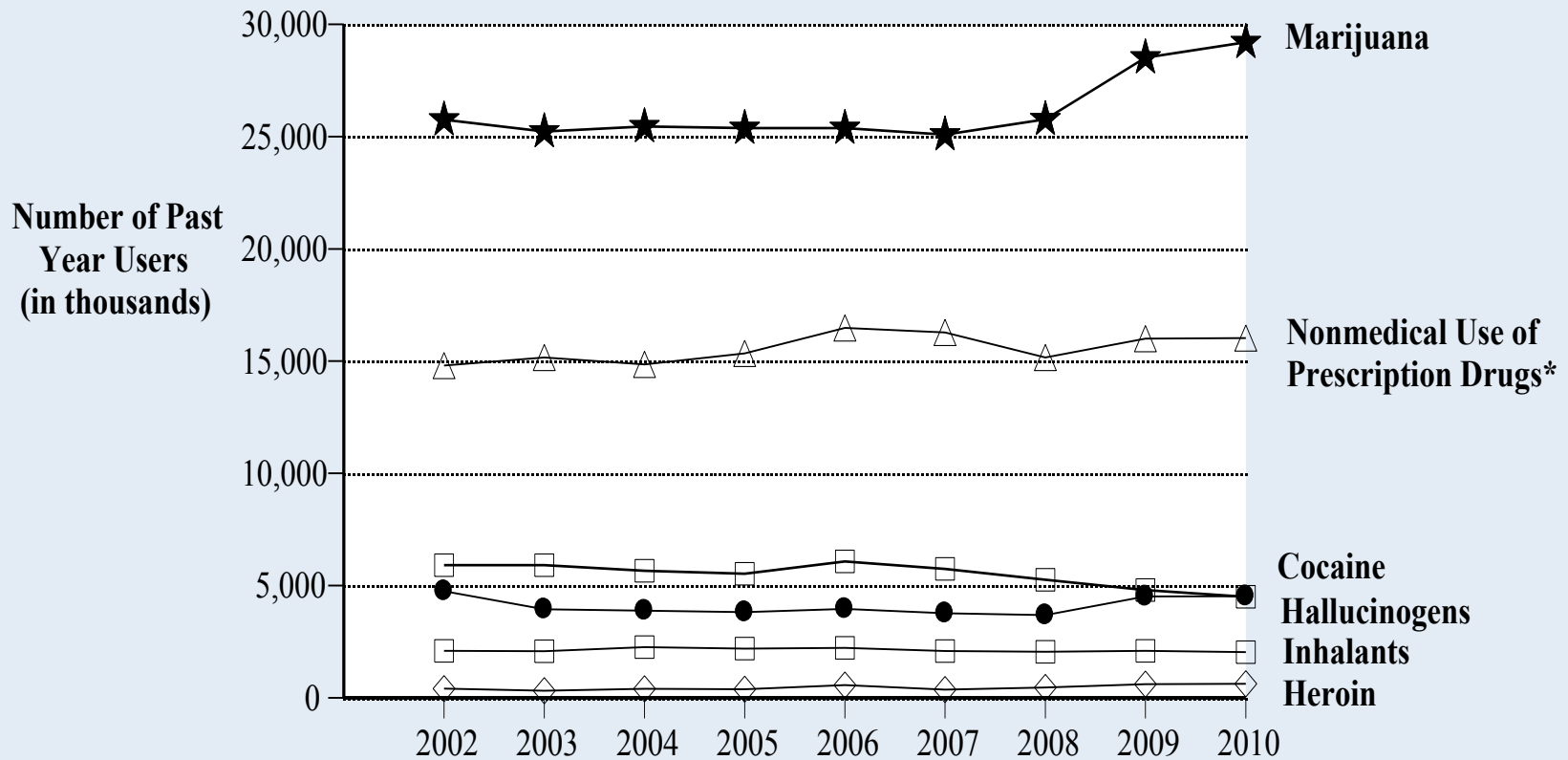
Perceived Risk in Binge Drinking



Past 30 Day Marijuana Use

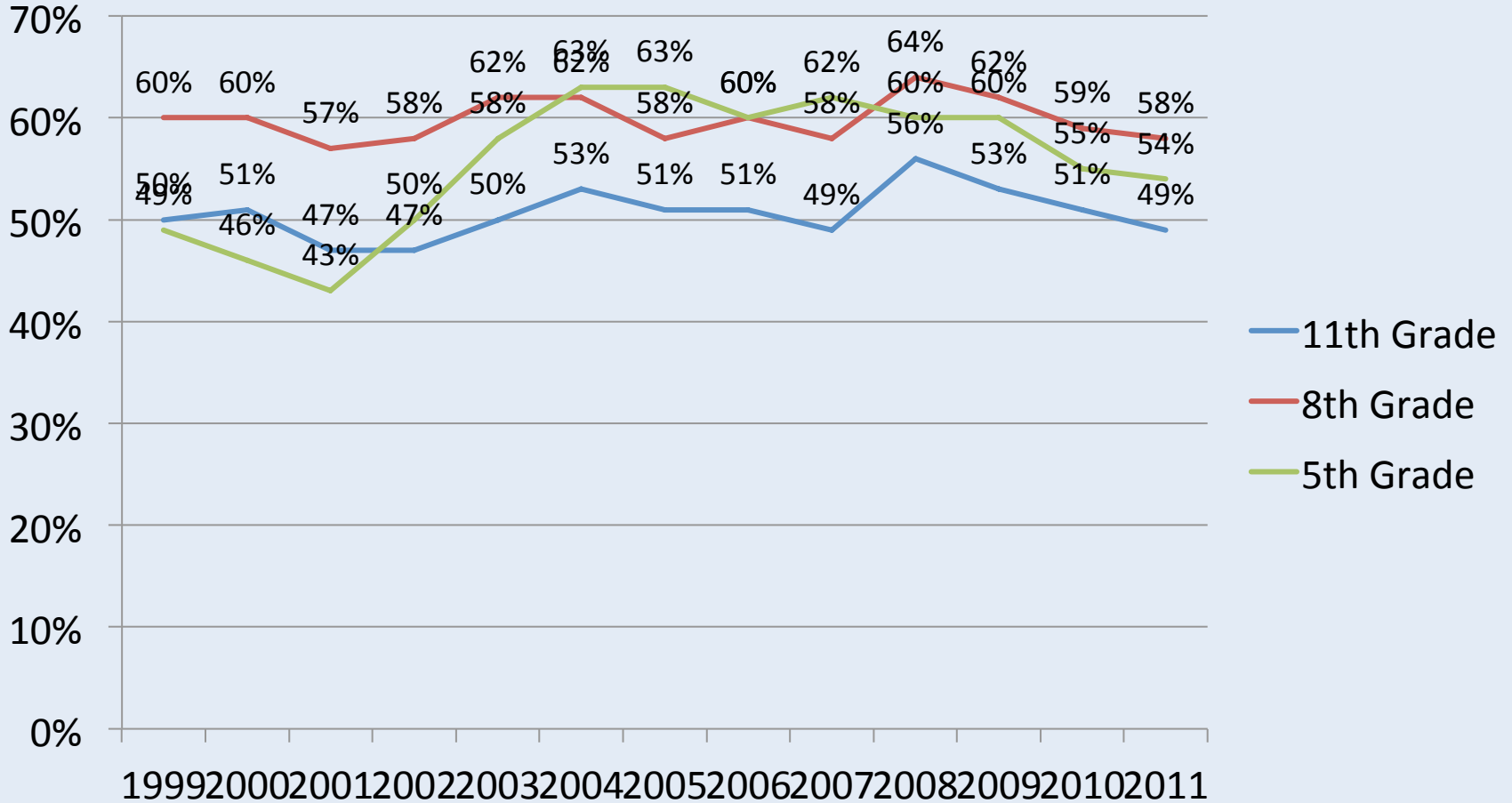


**Estimated Number (in thousands) of Past Year Users of Marijuana,
 Prescription Drugs Used Nonmedically, Cocaine, Hallucinogens, Inhalants,
 and Heroin,
 U.S. Residents Ages 12 and Older, 2002-2010
 From the National Survey on Drug Use and Health (NSDUH).**

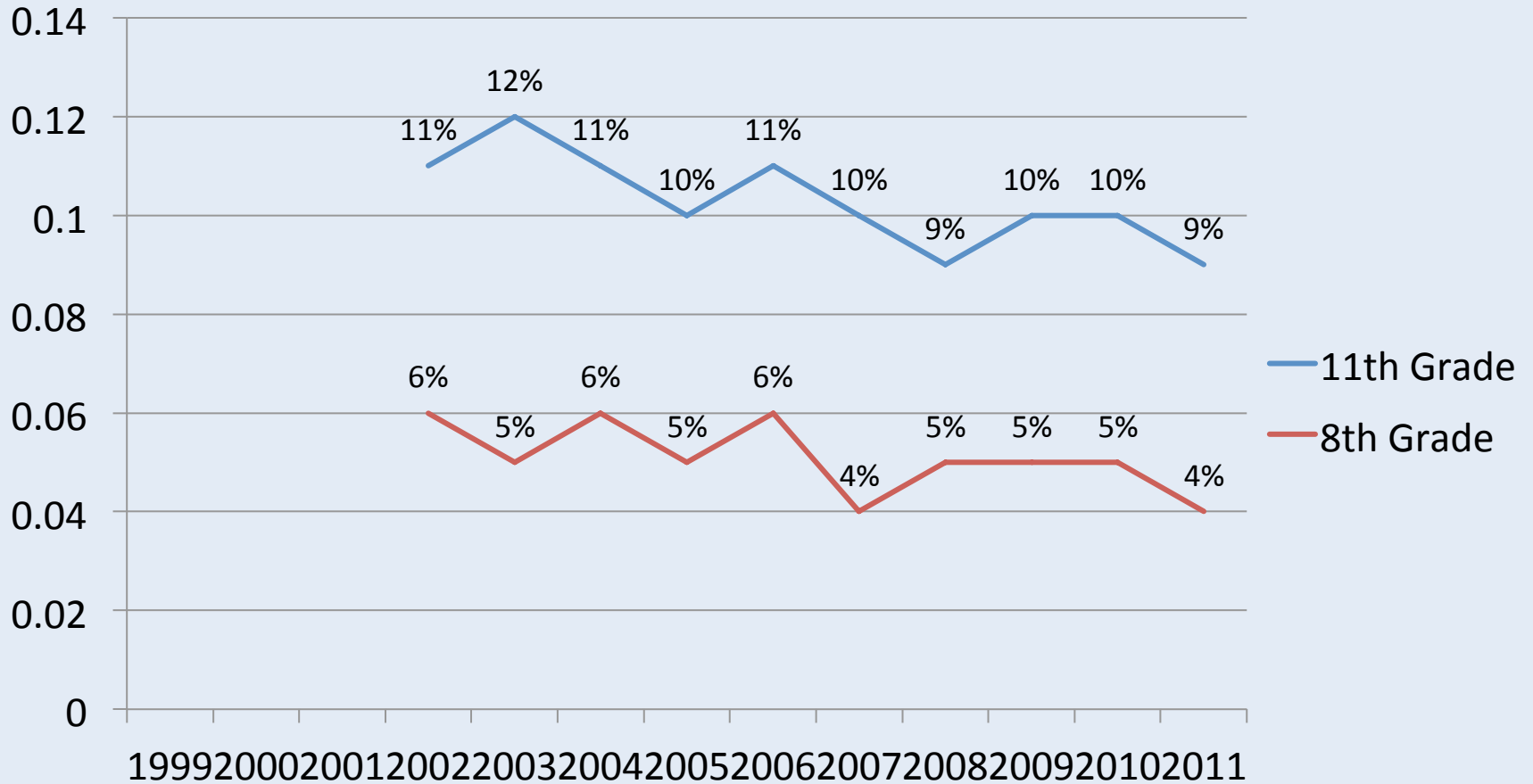


Source: CESAR FAX, Volume 20, Issue 37

Perceived Risk in Using Marijuana Weekly



Past Year Substance Use: Prescription Painkillers



2012 Delaware School Surveys



New Questions

- Impact of Economy
- Did you report bullying/was it addressed
- Name-calling, gender-based stereotypes
- Do parents monitor tv/phone/computer use
- Gestures
- Precursors of bullying
- Level of religious participation